



Postdoctoral Fellows 2025-2026

Alexis Adams-Clark, PhD

Contact: alexis_adams-clark@brown.edu

Postdoc Emphasis: Adult (RFP)

Program: Research Fellowship Program (RFP)

Fellowship: Violence Prevention

Graduate School: University of Oregon

Internship Program: Alpert Medical School of Brown University



Clinical Interests: Third-wave cognitive behavioral therapies for emotion dysregulation, suicidality/self-injury, and trauma disorders; evidence-based PTSD treatments; comorbid trauma-related disorders; women's mental health.

Research Interests: Sexual violence intervention and prevention; institutional betrayal trauma-informed policy; the role of transdiagnostic factors in PTSD and trauma outcomes (e.g., emotion regulation).

Allegra Anderson, PhD

Contact: allegra_anderson@brown.edu

Postdoc Emphasis: Suicide T32

Program: Research Fellowship Program (RFP)

Fellowship: Suicide Research T32

Graduate School: Vanderbilt University

Internship Program: Alpert Medical School of Brown University



Clinical Interests: Role of parenting behaviors, biosocial theory, and emotion regulation in promoting resilience in adolescents with trauma histories and suicidal ideation.

Research Interests: Familial, behavioral, and physiological mechanisms influencing the development, maintenance, and treatment of psychopathology in youth with chronic SI and trauma histories.



Cara Antonaccio, PhD

Contact: cara_antonaccio@brown.edu

Postdoc Emphasis: Child

Program: Research Fellowship Program (RFP)

Fellowship: Implementation Science and Global Mental Health

Graduate School: Boston College School of Social Work

Internship Program: n/a

Clinical Interests: Post-traumatic stress in communities affected by adversity; mental health and psychosocial support interventions for conflict- and cancer-affected youth and families.

Research Interests: Evaluating the implementation outcomes of transdiagnostic mental health interventions for youth and families affected by conflict and other forms of adversity; pediatric psychosocial oncology in the context of treatment and survivorship.



Ana Luisa Barbosa Torreao Dau, PhD

Contact: ana_luisa_barbosa_torreao_dau@brown.edu

Postdoc Emphasis: Child (CCPSP)

Program: Clinical Child Psychology Specialty Program (CCPSP)

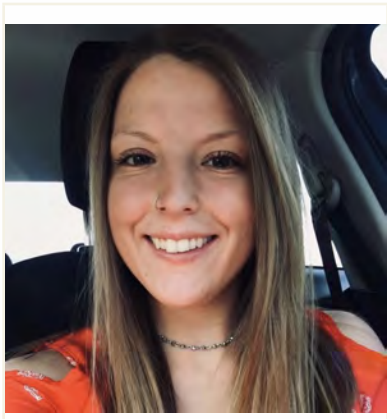
Fellowship: Early Childhood

Graduate School: University of Connecticut

Internship Program: University of Rochester Medical Center

Clinical Interests: Early childhood development, trauma, attachment parenting and interventions focused on caregivers.

Research Interests: Early childhood development and emotion regulation, as well as the impact of maternal mental health and trauma on attachment, parenting and early childhood development. Specifically, long term career goals include developing, delivering and evaluating caregiver-child interventions to high risk families.



Avery Beatty, PhD

Contact:avery_beatty@brown.edu

Postdoc Emphasis: Child (CCPSP)

Program: Clinical Child Psychology Specialty Program (CCPSP)

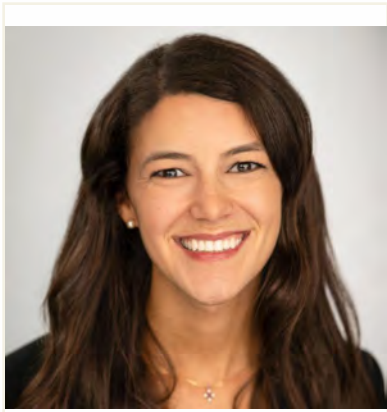
Fellowship: Clinical Outcomes of Child Intensive Services (PHP)

Graduate School: University of Rhode Island

Internship Program: Franciscan Children's

Clinical Interests: Assessment and treatment of acute psychopathology in children and families.

Research Interests: The underlying mechanisms that contribute to the onset and maintenance of acute psychopathology in children, with a focus on neurological, cognitive, and environmental factors.



Margaret Crane, PhD

Contact:margaret_crane@brown.edu

Postdoc Emphasis: HIV T32 (Child) / Child

Program: Research Fellowship Program (RFP)

Fellowship: Adolescent/Young Adult Biobehavioral HIV T32 /
Implementation Science

Graduate School: Temple University

Internship Program: New York Presbyterian-Weill Cornell Medicine

Clinical Interests: Cognitive behavioral therapy for youth anxiety and OCD; Parent coaching.

Research Interests: Dissemination and implementation of evidence-based interventions, policy, direct-to-consumer marketing, key opinion leaders.



Gina Erato Garza, PhD

Contact: gina_erato_garza@brown.edu

Postdoc Emphasis: HIV T32 (Beh Med)

Program: Research Fellowship Program (RFP)

Fellowship: Adolescent/Young Adult Biobehavioral HIV T32

Graduate School: Oklahoma State University

Internship Program: Alpert Medical School of Brown University

Clinical Interests: Understanding reproductive and sexual life events through developmental psychopathology and biopsychosocial frameworks, with an emphasis on treating perinatal mood and anxiety disorders with evidence-based interventions.

Research Interests: Examining the interplay of psychosocial (e.g., adversity, social support) and biological (e.g., sleep) factors on the development and maintenance of perinatal mood and anxiety disorders.



Danae Fields-Oriogun, PhD

Contact: danae_fields-oriogun@brown.edu

Postdoc Emphasis: Neuro (CNSP)

Program: Clinical Neuropsychology Specialty Program (CNSP)

Fellowship: Pediatric Neuropsychology

Graduate School: The University of Iowa

Internship Program: University of Oklahoma Health Science Ctr (OUHSC)

Clinical Interests: Role of psychology, medical conditions, and cognitive processes on treatment planning and diagnosis clarification for children and adolescents particularly those from minoritized groups.

Research Interests: Neuropsychological profiles of youth with intersectional medical and mental health diagnoses, psychometric properties of neuropsychological measures, & measure development/adaptation.



Taryn Fitzgerald, PhD

Contact: taryn_fitzgerald@brown.edu

Postdoc Emphasis: Adult (CPP)

Program: Clinical Psychology Program (CPP)

Fellowship: Posttraumatic Stress Disorder (PTSD)

Graduate School: University of Missouri St Louis

Internship Program: White River Junction VA Medical Center

Clinical Interests: Assessment and treatment of post traumatic stress disorder and comorbid disorders.

Research Interests: Biopsychosocial determinants of health in the context of trauma exposure/PTSD development, maintenance, and treatment.



Kathryn Forche, PhD

Contact: kathryn_forche@brown.edu

Postdoc Emphasis: Adult (CPP)

Program: Clinical Psychology Program (CPP)

Fellowship: Perinatal Mental Health

Graduate School: University of Detroit Mercy

Internship Program: Mid-Michigan Psychology Internship Consortium

Clinical Interests: Role of psychology during pregnancy and postpartum and the multidisciplinary collaboration necessary to support individuals and families throughout the perinatal time.

Research Interests: Assessing and understanding psychological health throughout the perinatal time to best support mothers, infants, and their families.



Kayla Ford, PhD

Contact: kayla_ford@brown.edu

Postdoc Emphasis: Child (CCPSP)

Program: Clinical Child Psychology Specialty Program (CCPSP)

Fellowship: Adolescent Forensic and Addiction Psychology

Graduate School: University of Arkansas - Fayetteville

Internship Program: Alpert Medical School of Brown University

Clinical Interests: Addressing complex mental health needs of trauma-exposed adolescents, particularly those involved in the criminal legal system, using third-wave interventions.

Research Interests: Exploring how interpersonal violence (e.g., sexual trauma) intersects with risky behaviors (e.g., substance use), and improving access to and the effectiveness of trauma-related interventions among justice-involved populations.



Christine Francis, PsyD

Contact: christine_francis@brown.edu

Postdoc Emphasis: Child (CCPSP)

Program: Clinical Child Psychology Specialty Program (CCPSP)

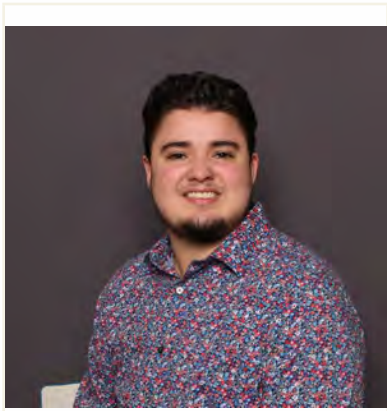
Fellowship: Adolescent Acute Care Services for Addiction and High-Risk Behaviors

Graduate School: William James College

Internship Program: LifeStance Health

Clinical Interests: Culturally sensitive interventions, trauma-informed care, anxiety, depression, trauma disorders, distress tolerance, and risk behaviors in adolescent populations.

Research Interests: Exploring the impact of familial and cultural influences on child/adolescent development; Promoting Professional Growth and Self-Mastery for Racially/Ethnically Diverse Psychologists.



Álvaro Gamio Cuervo, PhD

Contact: alvaro_gamio_cuervo@brown.edu

Postdoc Emphasis: Suicide T32

Program: Research Fellowship Program (RFP)

Fellowship: Suicide Research T32

Graduate School: University of Massachusetts Boston

Internship Program: CMTP Boston Medical Center

Clinical Interests: Culturally-responsive, evidence-based care for marginalized youth with experiences of complex trauma and suicidal ideation; LGBTQIA-affirmative, gender-affirming health; immigrant mental health.

Research Interests: With multiply-marginalized youth (LGBQ/transgender, BIPOC, immigrant): identification/prevention of suicidal thoughts and behaviors, family rejection/violence, and racial-gendered discrimination; methods: intensive longitudinal methods, qualitative, and mixed-methods.



Jamilah George, PhD

Contact: jamilah_george@brown.edu

Postdoc Emphasis: HIV T32

Program: Research Fellowship Program (RFP)

Fellowship: Adolescent/Young Adult Biobehavioral HIV T32

Graduate School: University of Connecticut

Internship Program: Alpert Medical School of Brown University

Clinical Interests: Culturally informed EBTs for PTSD, racial trauma, and related chronic health conditions (i.e., insomnia, pain); OCD and anxiety-related disorders; neurologically-based interventions; plant medicine/psychedelic-assisted therapies.

Research Interests: Sociocultural and political factors shaping help-seeking and outcomes in stress/trauma- and OCD-related disorders; efficacy of psychedelic therapies for treatment-resistant conditions; non-invasive neuromodulation (tDCS); effects of racism on health inequities among minoritized groups.



Christopher Georgiadis, PhD

Contact: christopher_georgiadis@brown.edu

Postdoc Emphasis: Suicide T32

Program: Research Fellowship Program (RFP)

Fellowship: Suicide Research T32

Graduate School: Florida International University

Internship Program: Alpert Medical School of Brown University

Clinical Interests: Cognitive behavioral therapy with exposure for pediatric anxiety and obsessive compulsive disorder.

Research Interests: Identifying and testing modifications to evidence-based treatments to promote engagement and therapeutic outcomes.



Maddi Gervasio-Pontarelli, PhD

Contact: maddi_gervasio@brown.edu

Postdoc Emphasis: Child (CCPSP)

Program: Clinical Child Psychology Specialty Program (CCPSP)

Fellowship: Adolescent Intensive Services

Graduate School: St. John's University

Internship Program: Charleston Consortium Psychology Internship (MUSC)

Clinical Interests: Increasing access to evidence-based interventions for traumatized youth in high acuity settings.

Research Interests: Understanding therapist level implementation and dissemination barriers/facilitators for trauma-specific EBIs.



Amrita Gill, PhD

Contact: amrita_gill@brown.edu

Postdoc Emphasis: Adult (RFP)

Program: Research Fellowship Program (RFP)

Fellowship: Implementation Science and Global Mental Health

Graduate School: Tulane University

Internship Program:

Clinical Interests: Role of psychology in developing mobile based geographical momentary assessment to reduce post-traumatic stress among youth and adults living with HIV.

Research Interests: Cognitive mechanisms underlying place based triggers in individuals living in adversity including living with HIV.



Theresa Gladstone, PhD

Contact: theresa_gladstone@brown.edu

Postdoc Emphasis: Child (RFP)

Program: Research Fellowship Program (RFP)

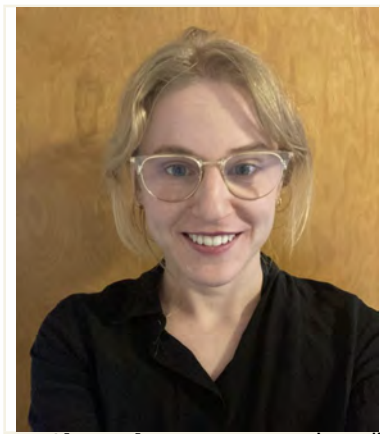
Fellowship: The Pediatric Anxiety Research Center (PARC) -
Community Based

Graduate School: Kent State University

Internship Program: Institute of Living/Hartford Healthcare

Clinical Interests: The treatment of anxiety and related disorders in children and adolescents from a cognitive behavior therapy approach with an emphasis on exposure and response prevention.

Research Interests: Exploring mechanisms of cognitive behavior therapy for youth with anxiety and their families as well as barriers to effective care.



Shelley Gresko, PhD

Contact: Shelley_Gresko@brown.edu

Postdoc Emphasis: Child (CCPSP)

Program: Clinical Child Psychology Specialty Program (CCPSP)

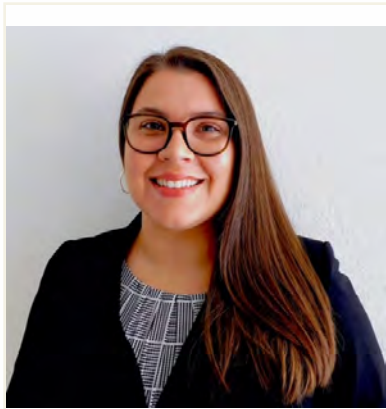
Fellowship: Adolescent Inpatient Services in Pediatric Psychology

Graduate School: University of Colorado Boulder

Internship Program: University of Rochester Medical Center

Clinical Interests: Interdisciplinary inpatient care for adolescents with serious mental illness and psychosocial support for children and adolescents experiencing co-occurring medical and psychiatric conditions.

Research Interests: Longitudinal predictors of adolescent and adult substance use disorders; familial and environmental influences on child and adolescent externalizing behaviors.



Alexandra Hernandez-Vallant, PhD

Contact: alexandra_hernandez-vallant@brown.edu

Postdoc Emphasis: Neuro (CNSP)

Program: Clinical Neuropsychology Specialty Program (CNSP)

Fellowship: Neuropsychology

Graduate School: University of New Mexico

Internship Program: University of Illinois Chicago

Clinical Interests: Conducting culturally and structurally responsive neuropsychological evaluations and neuropsychologically informed interventions with adult and geriatric populations, with a particular emphasis on health promotion and harm reduction

Research Interests: Applying implementation science and mixed methodology to increase the equitable provision of neuropsychological and psychological services across diverse populations and contexts.



Jennifer Hoots, PhD

Contact: jennifer_hoots@brown.edu

Postdoc Emphasis: Neuro (CNSP)

Program: Clinical Neuropsychology Specialty Program (CNSP)

Fellowship: Neuropsychology and Intervention

Graduate School: University of Illinois - Chicago

Internship Program: Edward Hines, Jr. VA Hospital

Clinical Interests: Adult neuropsychology, cognitive rehabilitation, and the application of motivational interviewing techniques within integrative healthcare and neuropsychology practice.

Research Interests: Affective and environmental influences on decision-making and interventions focused on health-related behavioral change.



Katherine Ingram, PhD

Contact: katherine_ingram@brown.edu

Postdoc Emphasis: RFP / STAR T32

Program: Research Fellowship Program (RFP)

Fellowship: Social Media Use, Sleep, and Suicidality in Adolescents (25-26)

Graduate School: University of North Carolina - Chapel Hill

Internship Program: Johns Hopkins University School of Medicine and Kennedy Krieger

Clinical Interests: Pediatric consult-liaison services and partial hospitalization programs, trauma-focused and trauma-informed interventions.

Research Interests: Assessment and treatment of child and adolescent traumatic stress and complex sequelae.



Aleksandr Karnick, PhD

Contact: aleksandr_karnick@brown.edu

Postdoc Emphasis: F32 (Adult)

Program: Research Fellowship Program (RFP)

Fellowship: F32 (Adult) (9/1/24-)

Advanced Quantitative Methods for Trauma, Suicide,

Graduate School: University of Southern Mississippi

Internship Program: Alpert Medical School of Brown University

Clinical Interests: Treatment of high-risk patients in integrated health settings using brief evidence-based interventions.

Research Interests: Modeling cognitive processes underlying decisions to use maladaptive coping strategies.



Lauren Kenney, PhD

Contact: lauren_kenney1@brown.edu

Postdoc Emphasis: Neuro (CNSP)

Program: Clinical Neuropsychology Specialty Program (CNSP)

Fellowship: Functional Neurosurgery

Graduate School: University of Florida

Internship Program: VA Boston Healthcare System

Clinical Interests: Assessing cognitive and functional changes in movement disorders, epilepsy, and neurodegenerative diseases of aging, particularly in the context of interdisciplinary teams.

Research Interests: Characterizing risk and resilience factors for cognitive decline in Parkinson's disease, including pre/post deep brain stimulation surgery.



Mindy Kibbey, PhD

Contact: mindy_kibbey@brown.edu

Postdoc Emphasis: Beh Med (CPP)

Program: Clinical Psychology Program (CPP)

Fellowship: Primary Care Behavioral Health

Graduate School: Rutgers University NJ-Piscataway/New Brunswick

Internship Program: Alpert Medical School of Brown University

Clinical Interests: Providing personally-tailored behavioral and acceptance-based treatments for individuals with medical comorbidities and/or aging-related concerns; promoting values-consistent living.

Research Interests: Treatment development/testing, measurement development/testing for older adults and medical populations.



Sara Landers, PhD

Contact: sara_landers@brown.edu

Postdoc Emphasis: HIV T32

Program: Research Fellowship Program (RFP)

Fellowship: Adolescent/Young Adult Biobehavioral HIV T32

Graduate School: Columbia School of Social Work

Internship Program: Hall Mercer Community Mental Health Clinic

Clinical Interests:

Research Interests: Innovative participatory approaches to addressing HIV and substance use among youth.



Laura Laumann, PhD

Contact: laura_laumann@brown.edu

Postdoc Emphasis: Beh Med T32

Program: Research Fellowship Program (RFP)

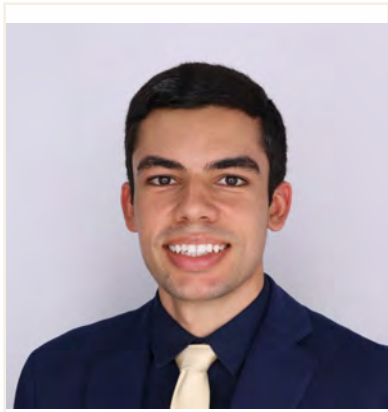
Fellowship: Cardiovascular Behavioral Medicine T32

Graduate School: University of Connecticut

Internship Program: Alpert Medical School of Brown University

Clinical Interests: Evidence-based treatment of depression, anxiety, PTSD; behavioral treatment of chronic pain; health behavior change in adults with chronic illness.

Research Interests: Stress, health behaviors (e.g., physical activity, sleep, and substance use), and associated mental and physical health outcomes; etiology, course, and treatment of chronic pain.



Rafael Leite, PhD

Contact: rafael_leite@brown.edu

Postdoc Emphasis: Beh Med T32

Program: Research Fellowship Program (RFP)

Fellowship: Cardiovascular Behavioral Medicine T32

Graduate School: University of Miami

Internship Program: Alpert Medical School of Brown University

Clinical Interests: Delivering evidence-based psychosocial interventions to individuals with chronic health conditions.

Research Interests: Understanding the role of weight stigma on health outcomes and disseminating health promotion interventions among systematically marginalized populations.



Gina Mason, PhD

Contact: gina_mason@brown.edu

Postdoc Emphasis: Child (RFP)

Program: Research Fellowship Program (RFP)

Fellowship: Sleep, Sleep Loss and the Neuroscience of Attention and Learning in Children

Graduate School: Cornell University

Internship Program: n/a

Clinical Interests: N/A

Research Interests: Influence of sleep restriction on brain connectivity, hyperactivity/impulsivity, and memory consolidation in neurotypical children and children with underlying neurodevelopmental conditions (ADHD, autism)



Rachel McDonald, PhD

Contact: rachel_mcdonald@brown.edu

Postdoc Emphasis: Child (RFP)

Program: Research Fellowship Program (RFP)

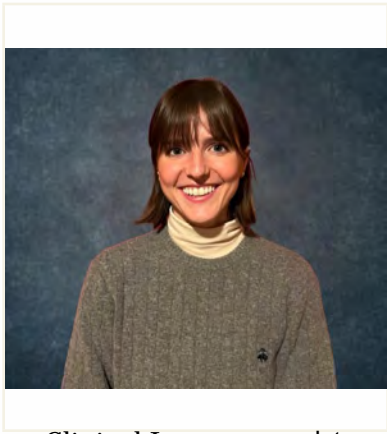
Fellowship: Adolescent/Young Adult Autism Research

Graduate School: Montclair State University

Internship Program: Alpert Medical School of Brown University

Clinical Interests: Transdiagnostic mechanisms as treatment targets for mental health concerns in autistic individuals.

Research Interests: Neural mechanisms of emotion dysregulation in autistic individuals and the role of these mechanisms in co-occurring mental health conditions.



Irena Mikhalyuk, PhD

Contact: irena_mikhalyuk@brown.edu

Postdoc Emphasis: Adult (CPP)

Program: Clinical Psychology Program (CPP)

Fellowship: General Mental Health

Graduate School: University of Rhode Island

Internship Program: Manchester VA Medical Center

Clinical Interests: Integration of psychology within interdisciplinary healthcare, with focus on ACT and other evidence-based approaches to support veterans facing diverse mental health conditions.

Research Interests: Implementation and evaluation of evidence-based practices and measure validation.



Kandace Mossing, PhD

Contact: kandace_mossing@brown.edu

Postdoc Emphasis: Child (CCPSP)

Program: Clinical Child Psychology Specialty Program (CCPSP)

Fellowship: Pediatric Psychology – Integrated Primary Care

Graduate School: University of Cincinnati

Internship Program: Nebraska Internship Consortium in Prof. Psych.

Clinical Interests: Solutions-focused behavioral health care for children and families, integrating other cognitive-behavioral and acceptance-based principles, as well as developmental evaluations. Integrated primary care, outpatient, and school-based services.

Research Interests: The robust integration of behavioral health services in schools and medical settings. Coaching and consultation. Discipline policies and practices in schools.



Caroline Nester Rooney, PhD

Contact: caroline_nester@brown.edu

Postdoc Emphasis: Neuro (CNSP)

Program: Clinical Neuropsychology Specialty Program (CNSP)

Fellowship: Aging and Dementia

Graduate School: CUNY-Queens College

Internship Program: Alpert Medical School of Brown University

Clinical Interests: Neuropsychological evaluation in diverse adults with complex medical presentations.

Research Interests: Promoting brain health and reducing disparities in dementia care through novel screening techniques; Role of health behaviors in healthy aging and neurodegenerative disease.



Kathleen O'Hora, PhD

Contact: kathleen_ohora@brown.edu

Postdoc Emphasis: Child (RFP)

Program: Research Fellowship Program (RFP)

Fellowship: Sleep, Sleep Loss and the Neuroscience of Attention and Learning in Children

Graduate School: University of California-Los Angeles

Internship Program: N/A

Clinical Interests: N/A

Research Interests: Neurobiology of sleep across typical development and in psychiatric neurodevelopmental disorders.



Megan Parker, PhD

Contact: megan_parker@brown.edu

Postdoc Emphasis: Beh Med T32

Program: Research Fellowship Program (RFP)

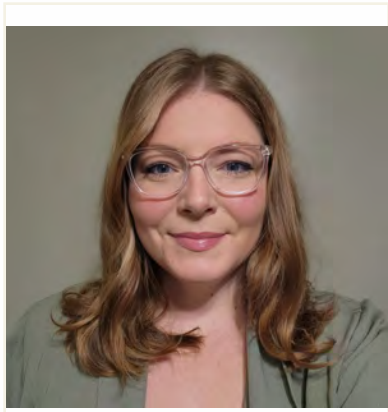
Fellowship: Cardiovascular Behavioral Medicine T32

Graduate School: Uniformed Services University

Internship Program: Alpert Medical School of Brown University

Clinical Interests: Eating, weight and body image concerns in pediatric populations (e.g., children and adolescents with diabetes, gastrointestinal conditions, endocrine reproductive disorders).

Research Interests: Mental health and weight regulatory behaviors among people with polycystic ovary syndrome. The mechanisms through which puberty increases risk for developing eating disordered behaviors.



Kendra Pizzonia, PhD

Contact: kendra_pizzonia@brown.edu

Postdoc Emphasis: Neuro (CNSP)

Program: Clinical Neuropsychology Specialty Program (CNSP)

Fellowship: Neuropsychology

Graduate School: Ohio University

Internship Program: Washington DC VA Medical Center

Clinical Interests: Neuropsychological assessment and intervention.

Research Interests: Neuropsychological assessment and intervention to promote independent functioning and address comorbid cognitive and psychiatric concerns.



Sarah Prieto, PhD

Contact: sarah_prieto@brown.edu

Postdoc Emphasis: Neuro (CNSP)

Program: Clinical Neuropsychology Specialty Program (CNSP)

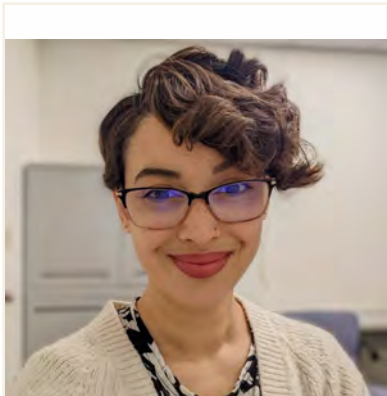
Fellowship: Alzheimer's Disease and Related Dementias

Graduate School: Ohio State University

Internship Program: Alpert Medical School of Brown University

Clinical Interests: Using neuropsychological assessments in neurodegenerative, neurological, and medically complex populations, particularly in mid to late life.

Research Interests: Investigating the impact of chronic and traumatic stressors on cognitive and outcomes.



Destiny Printz Pereira, PhD

Contact: destiny_printz_pereira@brown.edu

Postdoc Emphasis: Beh Med T32/STAR T32

Program: Research Fellowship Program (RFP)

Fellowship: Cardiovascular Behavioral Medicine T32 / Childhood Stress, Trauma, and Resilience T32

Graduate School: University of Connecticut

Internship Program: Greater Hartford Clinical Psychology Consortium

Clinical Interests: Promoting wellbeing in families exposed to trauma and childhood adversity, with an emphasis on Black, Latine, and urban low-income families from pregnancy to prekindergarten.

Research Interests: Upstream impact of trauma and stress on the dysregulation of stress response systems and health disparities, with a focus on cardiovascular and intergenerational processes.



Alexa Raudales, PhD

Contact: alexa_raudales@brown.edu

Postdoc Emphasis: Suicide T32

Program: Research Fellowship Program (RFP)

Fellowship: Suicide Research T32

Graduate School: University of Rhode Island

Internship Program: Alpert Medical School of Brown University

Clinical Interests: Empirically-supported interventions for suicide, trauma, and comorbid disorders among individuals from underserved and diverse backgrounds.

Research Interests: Factors underlying co-occurring suicide and posttraumatic stress symptoms among systemically marginalized populations.



Daliah Ross, PhD

Contact: daliah_ross@brown.edu

Postdoc Emphasis: Neuro (CNSP)

Program: Clinical Neuropsychology Specialty Program (CNSP)

Fellowship: Geriatric Neuropsychology

Graduate School: Ferkauf Graduate School of Psychology Yeshiva University

Internship Program: University of California, San Diego/VA San Diego

Clinical Interests: Neuropsychological assessment of adults and older adults with complex medical and neurological conditions, with a particular interest in differential diagnosis of neurodegenerative disorders.

Research Interests: Use of neuropsychological and neuroimaging tools to understand differential cognitive aging, including to aid in early detection, prognosis, and treatment of neurodegenerative disorders.



Regina Schreiber, PhD

Contact: regina_schreiber@brown.edu

Postdoc Emphasis: Adult (CPP)

Program: Clinical Psychology Program (CPP)

Fellowship: DBT PE, ACT, and Third Wave Behavioral Treatments for PTSD

Graduate School: University of Arkansas

Internship Program: Colorado Psychology Internship Consortium

Clinical Interests: Understanding and treating mechanisms underlying emotion dysregulation broadly, and emotion dysregulation in individuals with complex clinical presentations.

Research Interests: Identifying and conceptualizing mechanisms underlying emotion dysregulation in BPD and clinical overcontrol.



Danusha Selva Kumar, PhD

Contact: danusha_selva_kumar@brown.edu

Postdoc Emphasis: Beh Med (RFP)

Program: Research Fellowship Program (RFP)

Fellowship: Behavioral Intervention for Cardiovascular Health

Graduate School: Fordham University (Rosehill)

Internship Program: Alpert Medical School of Brown University

Clinical Interests: Providing evidence-based and third-wave treatments among individuals with comorbid mental illness and substance use or other chronic illness.

Research Interests: Understanding barriers to health behavior change especially among individuals traditionally underserved with the goal of providing effective interventions to reduce health disparities.



Kate Shirley, PhD

Contact: kate_shirley@brown.edu

Postdoc Emphasis: Adult (CPP)

Program: Clinical Psychology Program (CPP)

Fellowship: Serious Mental Illness (PRRC & Homeless-PACT) -
Mental Health

Graduate School: Oregon Health and Science University

Internship Program: Alpert Medical School of Brown University

Clinical Interests: Person-centered care to address complex psychiatric, medical, and psychosocial needs, particularly in older Veterans; collaboration with interdisciplinary teams.

Research Interests: Development and testing of multi-modal behavioral interventions to support cognition, quality of life, and overall health.



Simone Skeen, PhD

Contact: simone_skeen@brown.edu

Postdoc Emphasis: HIV T32

Program: Research Fellowship Program (RFP)

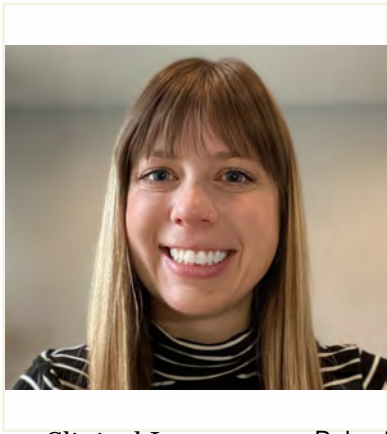
Fellowship: Adolescent/Young Adult Biobehavioral HIV T32

Graduate School: Celia Scott Weatherhead School of Public Health and
Tropical Medicine, Tulane University

Internship Program: n/a

Clinical Interests: N/A

Research Interests: Momentary, spatial, and structural/systemic determinants of self-destructive cognitions, focusing on chronic suicidality, HIV biobehavioral outcomes, and the optimization and cultural tailoring of digital therapeutics.



Molly Split, PhD

Contact: molly_split@brown.edu

Postdoc Emphasis: Neuro (CNSP)

Program: Clinical Neuropsychology Specialty Program (CNSP)

Fellowship: Alzheimer's Disease and Related Dementias

Graduate School: Drexel University

Internship Program: Emory University School of Medicine Internship in

Clinical Interests: Role of neuropsychology in the context of multidisciplinary care (i.e., diagnosis and treatment) for general medical and geriatric neuropsychological referrals.

Research Interests: Improving methodologies for early diagnosis and treatment of Alzheimer's disease and related dementias.



Mackenzie Stabile, PhD

Contact: mackenzie_stabile@brown.edu

Postdoc Emphasis: Neuro (CNSP)

Program: Clinical Neuropsychology Specialty Program (CNSP)

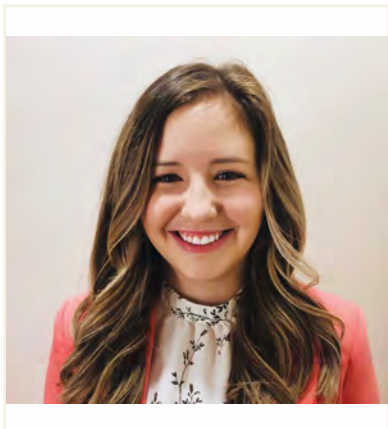
Fellowship: Neuropsychology/Geropsychology

Graduate School: University of Connecticut

Internship Program: MUSC/Charleston Consortium

Clinical Interests: Adult and geriatric neuropsychological assessment, with a particular interest in cortical syndromes.

Research Interests: Psycholinguistics and cognition in neurological and neurodevelopmental disorders; the utility of examining qualitative features of language to inform diagnosis and treatment.



Lindsay Stager, PhD

Contact: lindsay_stager@brown.edu

Postdoc Emphasis: Beh Med T32

Program: Research Fellowship Program (RFP)

Fellowship: Cardiovascular Behavioral Medicine T32

Graduate School: University of Alabama at Birmingham

Internship Program: Alpert Medical School of Brown University

Clinical Interests: Behavioral health and family based interventions with a focus in pediatric behavioral sleep medicine, psychology in multidisciplinary team settings, and the use of CBT alongside other evidence based intervention strategies.

Research Interests: 1) The relationship between sleep and cognitive function and the related clinical implications, particularly in vulnerable populations (ex. adolescents with chronic health conditions) 2) The impact of stigma on adolescent health.



Suzannah Stone, PhD

Contact: suzannah_stone@brown.edu

Postdoc Emphasis: Adult (CPP)

Program: Clinical Psychology Program (CPP)

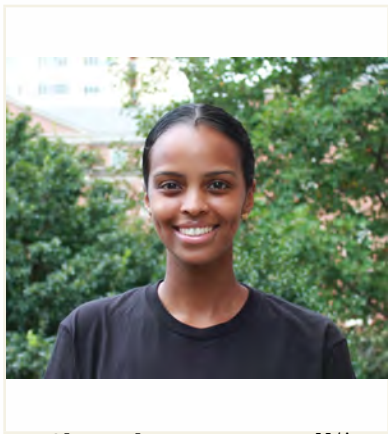
Fellowship: Acceptance and Commitment Therapy (ACT) - General

Graduate School: Ohio University

Internship Program: Iowa City VA Health Care System

Clinical Interests: Assessment, diagnosis, and treatment of borderline personality disorder (BPD) and other complex emotional regulation and trauma-related conditions; improving quality of and access to care for individuals living with these concerns.

Research Interests: Roles of the alliance and therapist effects in the treatment of BPD and expanding our understanding of the BPD diagnosis, including stigma toward it, to define areas for improvement in clinical training and techniques.



Kadija Tahlil, PhD

Contact: kadija_tahlil@brown.edu

Postdoc Emphasis: HIV T32

Program: Research Fellowship Program (RFP)

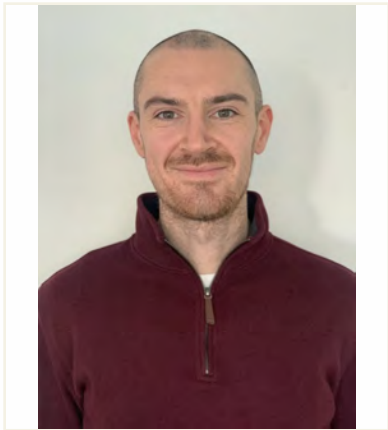
Fellowship: Adolescent/Young Adult Biobehavioral HIV T32

Graduate School: The University of North Carolina at Chapel Hill

Internship Program: N/A

Clinical Interests: N/A

Research Interests: Epidemiologist with interests in HIV and other infectious diseases, implementation science, and the use of participatory approaches in the research process.



Colin Teeter, PhD

Contact: colin_teeter@brown.edu

Postdoc Emphasis: Adult (CPP)

Program: Clinical Psychology Program (CPP)

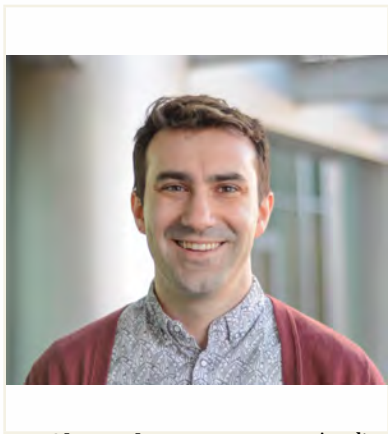
Fellowship: Trauma and Readjustment Clinic - Optional Special
Emphasis on MH Leadership/Program Development

Graduate School: Fordham University

Internship Program: VA Central Western Massachusetts Healthcare System

Clinical Interests: Utilizing evidence-based and client-centered interventions to provide psychosocial and vocational support for Veterans returning from deployment or recently separated from service.

Research Interests: Development and evaluation of group psychotherapy and community focused interventions as a method to bolster social resources and reduce the transition stress of Veterans recently separated from service.



Matthew Thompson, PhD

Contact: matthew_f_thompson@brown.edu

Postdoc Emphasis: HIV T32 (Adult)

Program: Research Fellowship Program (RFP)

Fellowship: Adolescent/Young Adult Biobehavioral HIV T32

Graduate School: Uniformed Services University

Internship Program: Alpert Medical School of Brown University

Clinical Interests: Application of evidence-based and recovery-oriented approaches for individuals at risk for suicide, including those with co-occurring substance use disorders and severe mental illness.

Research Interests: Examining biopsychosocial factors underpinning the etiology and treatment of suicide and co-occurring disorders, particularly among underserved populations.



Courtney Vaughan, PhD

Contact: courtney_vaughan@brown.edu

Postdoc Emphasis: Adult (CPP)

Program: Clinical Psychology Program (CPP)

Fellowship: CBT and Third-Wave Behavioral Treatments for Substance Use Disorders (SUDs) - CARS

Graduate School: Uniformed Services University of the Health Sciences (USUHS)

Internship Program: Minneapolis VA Health Care System

Clinical Interests: Understanding and treating SUDs and related complex mental health disorders.

Research Interests: Factors influencing substance use, primary alcohol use, and implications for treatment.



Ky Vuong, PsyD

Contact: ky_vuong@brown.edu

Postdoc Emphasis: Child (CCPSP)

Program: Clinical Child Psychology Specialty Program (CCPSP)

Fellowship: Pediatric Psychology - Integrated Primary Care

Graduate School: Chaminade University of Honolulu.

Internship Program: Wilford Hall, Joint Base San Antonio-Lackland

Clinical Interests: Connection between primary care and specialty care for children with signs of autism, Multidisciplinary care models for supporting early conduct disorder concerns in children.

Research Interests: Impact of limited BH care impacting risk factors for youth diagnosed with Autism, Iatrogenic effects of delaying BH care for mood disorders in children.



Elinor Waite, PhD

Contact: elinor_waite@brown.edu

Postdoc Emphasis: Suicide T32

Program: Research Fellowship Program (RFP)

Fellowship: Suicide Research T32

Graduate School: University of Massachusetts - Amherst

Internship Program: Alpert Medical School of Brown University

Clinical Interests: Evidence-based interventions for personality disorders, suicidality/self-injury, emotion dysregulation, trauma disorders, and co-occurring disorders; dialectical behavior therapy.

Research Interests: Development of borderline personality disorder in adolescence emerging adulthood; biological, emotional, and interpersonal factors related to BPD development and symptoms; protective/risk factors for suicide/NSSI; premenstrual dysphoric disorder and hormone sensitivity.
