



Postdoctoral Fellows 2024-2025



Alexis Adams-Clark, PhD

Contact: alexis_adams-clark@brown.edu

Postdoc Emphasis: Adult

Program: Research Fellowship Program (RFP)

Fellowship: Violence Prevention

Graduate School: University of Oregon

Internship Program: Alpert Medical School of Brown University

Clinical Interests: Third-wave cognitive behavioral therapies for emotion dysregulation, suicidality/self-injury, and trauma disorders; evidence-based PTSD treatments; comorbid trauma-related disorders; women's mental health.

Research Interests: Sexual violence intervention and prevention; institutional betrayal trauma-informed policy; the role of transdiagnostic factors in PTSD and trauma outcomes (e.g., emotion regulation).



Kira Alexander, PhD

Contact: kira_alexander@brown.edu

Postdoc Emphasis: Child (CCPSP)

Program: Clinical Child Psychology Specialty Program (CCPSP)

Fellowship: Adolescent Acute Care Services for Addiction and High-Risk Behaviors

Graduate School: University of Central Arkansas

Internship Program: Hawaii Psychology Internship Consortium

Clinical Interests: Trauma-informed care and solution-focused interventions through counseling, diagnostic assessment refinement, and program development for marginalized and high-risk youth and adolescent populations.

Research Interests: Minimization of the achievement gap for minority and marginalized populations across multiple domains and development of trauma-focused interventions across the lifespan with and emphasis on early childhood and adolescence.



Allegra Anderson, PhD

Contact: allegra_anderson@brown.edu

Postdoc Emphasis: Suicide T32

Program: Research Fellowship Program (RFP)

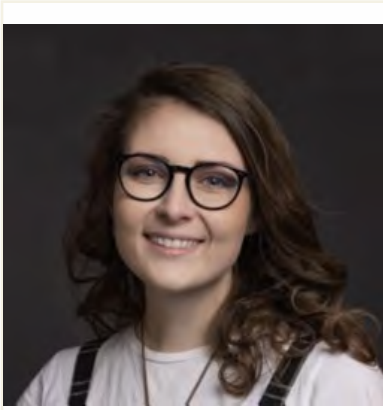
Fellowship: Suicide Research T32

Graduate School: Vanderbilt University

Internship Program: Alpert Medical School of Brown University

Clinical Interests: Role of parenting behaviors, biosocial theory, and emotion regulation in promoting resilience in adolescents with trauma histories and suicidal ideation.

Research Interests: Familial, behavioral, and physiological mechanisms influencing the development, maintenance, and treatment of psychopathology in youth with chronic SI and trauma histories.



Cara Antonaccio, PhD

Contact: cara_antonaccio@brown.edu

Postdoc Emphasis: Child

Program: Research Fellowship Program (RFP)

Fellowship: Implementation Science and Global Mental Health

Graduate School: Boston College School of Social Work

Internship Program: n/a

Clinical Interests: Post-traumatic stress in communities affected by adversity; mental health and psychosocial support interventions for conflict- and cancer-affected youth and families.

Research Interests: Evaluating the implementation outcomes of transdiagnostic mental health interventions for youth and families affected by conflict and other forms of adversity; pediatric psychosocial oncology in the context of treatment and survivorship.

Emily Beckmann, PhD

Contact: emily_beckmann@brown.edu

Postdoc Emphasis: Child (CCPSP)

Program: Clinical Child Psychology Specialty Program (CCPSP)

Fellowship: Pediatric Psychology

Graduate School: University of Cincinnati

Internship Program: Alpert Medical School of Brown University

Clinical Interests: Complex medical and psychiatric presentations of eating disorders and family-focused interventions for children and adolescents.

Research Interests: Program-development and evaluation for eating disorder interventions for children and adolescents.

Dominique Broadnax, PhD

Contact: dominique_broadnax@brown.edu

Postdoc Emphasis: Adult (CPP)

Program: Clinical Psychology Program (CPP)

Fellowship: DBT PE, ACT, and Third Wave Behavioral Treatments for PTSD

Graduate School: Indiana University of Pennsylvania

Internship Program: Aspire Health Alliance

Clinical Interests: Treatment of complex post-traumatic stress disorder in marginalized adults; the impact of oppressive systems on adults receiving trauma-informed care; interpersonal dysfunction in adults with trauma and stress-related disorders.

Research Interests: The modification of evidence-based trauma treatment to account for the influence of socio-cultural factors on mental health challenges. The impact of maladaptive relationship beliefs on relationship experiences (e.g., satisfaction, existential isolation, forgiveness, and connectedness).



Frances Calkins, PhD

Contact: frances_calkins@brown.edu

Postdoc Emphasis: Adult (CPP)

Program: Clinical Psychology Program (CPP)

Fellowship: Perinatal Mental Health

Graduate School: University of Nebraska - Lincoln

Internship Program: Emory University School of Medicine

Clinical Interests: I aim to apply a social justice lens to provide evidence-based treatment and assessment to individuals and families navigating stress and adversity, particularly during reproductive transitions.

Research Interests: Improving interventions through identifying intrapersonal, interpersonal, and sociocultural factors that impact individuals and couples during times of reproductive transition and adversity.



Nicholas Canby, PhD

Contact: nicholas_canby@brown.edu; dr.nicholas.

Postdoc Emphasis: Adult

Program: Research Fellowship Program (RFP)

Fellowship: Interdisciplinary Mindfulness and Meditation Research

Graduate School: Clark University

Internship Program: Southern Arizona VA Health Care System

Clinical Interests: Treating patients with trauma, religious/existential issues, dissociation, couples.

Research Interests: Mindfulness meditation, anomalous and dissociative experiences, mechanisms and moderators of psychological treatments, psychology of religion, and intimacy.



Margaret Crane, PhD

Contact: margaret_crane@brown.edu

Postdoc Emphasis: Child

Program: Research Fellowship Program (RFP)

Fellowship: Implementation Science

Graduate School: Temple University

Internship Program: New York Presbyterian-Weill Cornell Medicine

Clinical Interests: Cognitive behavioral therapy for youth anxiety and OCD; Parent coaching.

Research Interests: Dissemination and implementation of evidence-based interventions, policy, direct-to-consumer marketing, key opinion leaders.



Kristine Durkin, PhD

Contact: kristine_durkin@brown.edu

Postdoc Emphasis: F32 (Child) / Child T32

Program: Research Fellowship Program (RFP)

Fellowship: F32 (Child)
Child Mental Health Research T32

Graduate School: West Virginia University

Internship Program: Alpert Medical School of Brown University

Clinical Interests: Evidence-based evaluations and interventions to foster adjustment to diagnosis, quality of life, and psychosocial functioning in pediatric patients.

Research Interests: Development and evaluation of behavioral interventions to promote self-management of chronic illness across the child's lifespan (e.g., adherence to medication, transfer of responsibility from caregiver to child, readiness to transition to adult care).



Deanna Eilenberger, PsyD

Contact: deanna_eilenberger@brown.edu

Postdoc Emphasis: Neuro (CNSP)

Program: Clinical Neuropsychology Specialty Program (CNSP)

Fellowship: Neuropsychology

Graduate School: Immaculata University

Internship Program: Phoenix VA Health Care System

Clinical Interests: Role of neuropsychological evaluation in differential diagnosis of neurodegenerative disorders and provision of resources to increase quality of life in geriatric populations.

Research Interests: Investigation of modifiable risk factors of cognitive decline and neuropsychological sequelae of various neurodegenerative conditions.



Gina Erato Garza, PhD

Contact: gina_erato_garza@brown.edu

Postdoc Emphasis: HIV T32 (Beh Med)

Program: Research Fellowship Program (RFP)

Fellowship: Adolescent/Young Adult Biobehavioral HIV T32

Graduate School: Oklahoma State University

Internship Program: Alpert Medical School of Brown University

Clinical Interests: Understanding reproductive and sexual life events through developmental psychopathology and biopsychosocial frameworks, with an emphasis on treating perinatal mood and anxiety disorders with evidence-based interventions.

Research Interests: Examining the interplay of psychosocial (e.g., adversity, social support) and biological (e.g., sleep) factors on the development and maintenance of perinatal mood and anxiety disorders.

Erick Fedorenko, PhD

Contact: erick_fedorenko@brown.edu

Postdoc Emphasis: STAR T32

Program: Research Fellowship Program (RFP)

Fellowship: Childhood Stress, Trauma, and Resilience T32

Graduate School: Rutgers University NJ-Piscataway/New Brunswick

Internship Program: Alpert Medical School of Brown University



Clinical Interests: Cognitive-behavioral and acceptance-based interventions for anxiety, OCD, PTSD, and related disorders.

Research Interests: The cognitive-affective and neural processes involved in the etiology and treatment of fear-related and distress-related disorders.

David Forman, PhD

Contact: david_forman@brown.edu

Postdoc Emphasis: Adult (CPP)

Program: Clinical Psychology Program (CPP)

Fellowship: Acceptance and Commitment Therapy (ACT)

Graduate School: University of New Mexico - Albuquerque

Internship Program: VA Maryland Health Care System / University of Mar



Clinical Interests: The application of empirically-supported mindfulness and acceptance-based therapies to promote valued living in individuals experiencing emotion dysregulation, trauma related difficulties, mood challenges, and problematic substance use.

Research Interests: Behavioral interventions for addiction problems with a focus on psychotherapeutic processes of change and first clinical encounters.

Emily Fu, PhD

Contact: emily_fu2@brown.edu

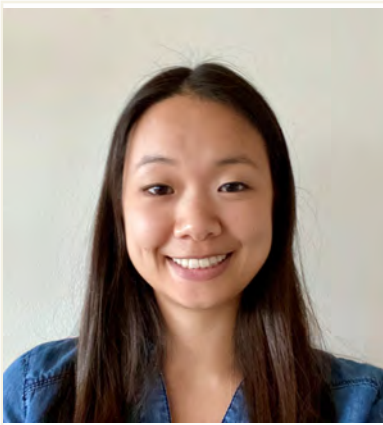
Postdoc Emphasis: Beh Med

Program: Research Fellowship Program (RFP)

Fellowship: Implementation Science

Graduate School: Northwestern University Feinberg School of Med.

Internship Program: Alpert Medical School of Brown University



Clinical Interests: Integrated behavioral medicine to improve health and quality of life outcomes.

Research Interests: Tailored health behavior change interventions, implementation science of evidence-based innovations.

Christopher Georgiadis, PhD

Contact: christopher_georgiadis@brown.edu

Postdoc Emphasis: Suicide T32

Program: Research Fellowship Program (RFP)

Fellowship: Suicide Research T32

Graduate School: Florida International University

Internship Program: Alpert Medical School of Brown University



Clinical Interests: Cognitive behavioral therapy with exposure for pediatric anxiety and obsessive compulsive disorder.

Research Interests: Identifying and testing modifications to evidence-based treatments to promote engagement and therapeutic outcomes.



Amrita Gill, PhD

Contact: amrita_gill@brown.edu

Postdoc Emphasis: Adult

Program: Research Fellowship Program (RFP)

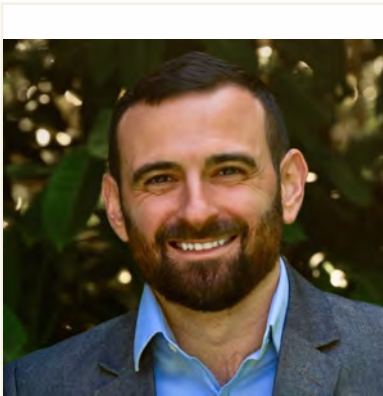
Fellowship: Implementation Science and Global Mental Health

Graduate School: Tulane University

Internship Program:

Clinical Interests: Role of psychology in developing mobile based geographical momentary assessment to reduce post-traumatic stress among youth and adults living with HIV.

Research Interests: Cognitive mechanisms underlying place based triggers in individuals living in adversity including living with HIV.



Benjamin Goldwasser, PsyD

Contact: benjamin_goldwasser@brown.edu

Postdoc Emphasis: Beh Med (CPP)

Program: Clinical Psychology Program (CPP)

Fellowship: Primary Care Behavioral Health

Graduate School: Palo Alto University

Internship Program: VA Northern California Health Care System

Clinical Interests: Addressing comorbid mental health and medical conditions through brief evidence-based treatments within an integrated mental health model.

Research Interests: Adapting treatments implemented in primary care settings to be culturally informed and responsive while improving access to underserved populations.



Sugandha Gupta, PhD

Contact: sugandha_gupta@brown.edu

Postdoc Emphasis: Beh Med T32

Program: Research Fellowship Program (RFP)

Fellowship: Cardiovascular Behavioral Medicine T32

Graduate School: City University of New York

Internship Program: Rush University Medical Center

Clinical Interests: Evidence-based and culturally-sensitive health-related interventions for individuals with co-morbid medical and psychological concerns.

Research Interests: Social and cultural contexts that shape health behavior change among communities disproportionately affected by chronic illness, including cardiovascular disease.



Linda Guzman, PhD

Contact: linda_guzman@brown.edu

Postdoc Emphasis: Beh Med

Program: Research Fellowship Program (RFP)

Fellowship: Implementation Science

Graduate School: University of Arkansas - Fayetteville

Internship Program: Alpert Medical School of Brown University

Clinical Interests: The role of psychology within integrated healthcare settings to increase access to behavioral health services for individuals with complex physical and mental health care needs.

Research Interests: Increasing access to mental health care services, with a particular focus on culturally responsive evidence-based treatments for marginalized populations.



Courtnee Hall, PsyD

Contact: courtnee_hall@brown.edu

Postdoc Emphasis: Adult (CPP)

Program: Clinical Psychology Program (CPP)

Fellowship: Trauma and Readjustment Clinic: Special Emphasis on
MH Leadership/Program Administration

Graduate School: Spalding University

Internship Program: VA Maine Healthcare System Psychology Internship

Clinical Interests: The role of psychology in supporting veterans returning from deployment and learning to readjust/reengage in a life with meaning, as well as working with LGBTQ+ individuals, individuals experiencing grief, and the role of advocacy in mental health leadership.

Research Interests: Research that improves our conceptualizations of grief and readjustment post-deployment, as well as better understanding the ways we can improve our clinical work to promote inclusive and safe spaces for veterans of minority statuses.



Ingrid Hastedt, PhD

Contact: ingrid_hastedt@brown.edu

Postdoc Emphasis: Neuro (CNSP)

Program: Clinical Neuropsychology Specialty Program (CNSP)

Fellowship: Pediatric Neuropsychology

Graduate School: University of Massachusetts Boston

Internship Program: Nicklaus Children's Hospital

Clinical Interests: Neuropsychological assessment of children with various medical, neurodevelopmental, and psychiatric conditions, including assessment of bilingual and Spanish-speaking children.

Research Interests: Brain development and neuropsychological functioning in children with neurodevelopmental disorders, including differences between those exposed to one versus more than one language. Considerations for neuropsychological assessment of bi/multilingual children.

April Highlander, PhD

Contact: april_highlander@brown.edu

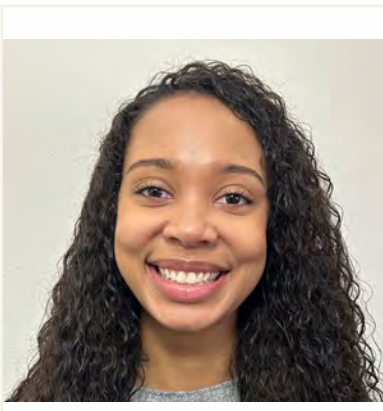
Postdoc Emphasis: STAR T32 / Child T32

Program: Research Fellowship Program (RFP)

Fellowship: Childhood Stress, Trauma, and Resilience (STAR) T32 /
Child Mental Health Research T32

Graduate School: University of North Carolina - Chapel Hill

Internship Program: Western Psychiatric Hospital



Clinical Interests: Family-based treatments for emotional and behavioral dysregulation in children and adolescents.

Research Interests: Psychosocial mechanisms of externalizing disorders and risk factors related to disparities in care.

Emily Hill, PhD

Contact: emily_e_hill@brown.edu

Postdoc Emphasis: Child (CCPSP)

Program: Clinical Child Psychology Specialty Program (CCPSP)

Fellowship: Clinical Outcomes of Child Intensive Services (PHP)

Graduate School: Northeastern University

Internship Program: Devereux Advanced Behavioral Health



Clinical Interests: Providing comprehensive support to youth, their caregivers, and other key stakeholders facing an array of social-emotional and behavioral challenges.

Research Interests: The development, evaluation, and implementation of social-emotional and behavioral assessment tools and interventions in schools and other applied settings.

Jennifer Hoots, PhD

Contact: jennifer_hoots@brown.edu

Postdoc Emphasis: Neuro (CNSP)

Program: Clinical Neuropsychology Specialty Program (CNSP)

Fellowship: Neuropsychology and Intervention

Graduate School: University of Illinois - Chicago

Internship Program: Edward Hines, Jr. VA Hospital



Clinical Interests: Adult neuropsychology, cognitive rehabilitation, and the application of motivational interviewing techniques within integrative healthcare and neuropsychology practice.

Research Interests: Affective and environmental influences on decision-making and interventions focused on health-related behavioral change.

Katherine Ingram, PhD

Contact: katherine_ingram@brown.edu

Postdoc Emphasis: STAR T32

Program: Research Fellowship Program (RFP)

Fellowship: Childhood Stress, Trauma, and Resilience T32

Graduate School: University of North Carolina - Chapel Hill

Internship Program: Johns Hopkins University School of Medicine and
Kennedy Krieger



Clinical Interests: Dialectical evidence-based practices for treating traumatic stress and high-risk behavior among children and adolescents in acute care and high-need settings.

Research Interests: Role of traumatic stress in self-harm and suicidality among children and adolescents and evidence based acute care services for this patient population.



Aleksandr Karnick, PhD

Contact: aleksandr_karnick@brown.edu

Postdoc Emphasis: F32 (Adult)

Program: Research Fellowship Program (RFP)

Fellowship: F32 (Adult) (9/1/24-)

Advanced Quantitative Methods for Trauma, Suicide,

Graduate School: University of Southern Mississippi

Internship Program: Alpert Medical School of Brown University

Clinical Interests: Treatment of high-risk patients in integrated health settings using brief evidence-based interventions.

Research Interests: Modeling cognitive processes underlying decisions to use maladaptive coping strategies.

Sara Landers, PhD

Contact: sara_landers@brown.edu

Postdoc Emphasis: HIV T32

Program: Research Fellowship Program (RFP)

Fellowship: Adolescent/Young Adult Biobehavioral HIV T32

Graduate School: Columbia School of Social Work

Internship Program: Hall Mercer Community Mental Health Clinic

Clinical Interests:

Research Interests: Innovative participatory approaches to addressing HIV and substance use among youth.

Laura Laumann, PhD

Contact: laura_laumann@brown.edu

Postdoc Emphasis: Beh Med T32

Program: Research Fellowship Program (RFP)

Fellowship: Cardiovascular Behavioral Medicine T32

Graduate School: University of Connecticut

Internship Program: Alpert Medical School of Brown University

Clinical Interests: Evidence-based treatment of depression, anxiety, and PTSD and health behavior change in adults with chronic illness.

Research Interests: Stress, health behaviors (e.g., physical activity, sleep, and nicotine use), and associated mental and physical health outcomes.

Jerin Lee, PhD

Contact: jerin_lee@brown.edu

Postdoc Emphasis: Adult (CPP)

Program: Clinical Psychology Program (CPP)

Fellowship: Posttraumatic Stress Disorder (PTSD)

Graduate School: University of Connecticut

Internship Program: VA Connecticut West Haven Doctoral Internship

Clinical Interests: Evidence-based treatment of PTSD, trauma, and comorbid disorders; integrated approaches; culturally responsive care.

Research Interests: Trauma; PTSD; sexual assault experience; pain; treatment efficacy and effectiveness; mindfulness; health behaviors.



Courtney Lopez, PsyD

Contact: courtney_lopez@brown.edu

Postdoc Emphasis: Adult (CPP)

Program: Clinical Psychology Program (CPP)

Fellowship: Serious Mental Illness (PRRC & Homeless-PACT) -
Mental Health

Graduate School: William James College

Internship Program: Tewksbury Hospital

Clinical Interests: Providing evidence-based practices to support a socioeconomically diverse population experiencing persistent serious mental illness; using a holistic framework to better understand individual differences in a person's life and foster social inclusion through psychosocial rehabilitation, including using the recovery model by building resilience and emphasizing hope.

Research Interests: The role of early life experiences, genetic vulnerabilities, and epigenetics in understanding individual differences in the development of serious mental illness.



Gina Mason, PhD

Contact: gina_mason@brown.edu

Postdoc Emphasis: Child

Program: Research Fellowship Program (RFP)

Fellowship: Sleep, Sleep Loss and the Neuroscience of Attention
and Learning in Children

Graduate School: Cornell University

Internship Program: n/a

Clinical Interests: N/A

Research Interests: Influence of sleep restriction on brain connectivity, hyperactivity/impulsivity, and memory consolidation in neurotypical children and children with underlying neurodevelopmental conditions (ADHD, autism)



Jiwon Min, PhD

Contact: jiwon_min@brown.edu

Postdoc Emphasis: Adult

Program: Research Fellowship Program (RFP)

Fellowship: Behavioral Medicine and Addictions Research -
Quantitative Methods Focus

Graduate School: Oklahoma State University

Internship Program: University of Mississippi Medical Center

Clinical Interests: Transdiagnostic psychological treatment of maladaptive behaviors related to personality disorders (e.g., substance use, nonsuicidal self-injury).

Research Interests: Digital mental health; development, evaluation, and optimization of technology-assisted psychological interventions for maladaptive behaviors related to personality disorders (e.g., substance use, nonsuicidal self-injury).



Caroline Nester Rooney, PhD

Contact: caroline_nester@brown.edu

Postdoc Emphasis: Neuro (CNSP)

Program: Clinical Neuropsychology Specialty Program (CNSP)

Fellowship: Aging and Dementia

Graduate School: CUNY-Queens College

Internship Program: Alpert Medical School of Brown University

Clinical Interests: Neuropsychological evaluation in diverse adults with complex medical presentations.

Research Interests: Promoting brain health and reducing disparities in dementia care through novel screening techniques; Role of health behaviors in healthy aging and neurodegenerative disease.

Sarah Neville, PhD

Contact: sarah_neville@brown.edu

Postdoc Emphasis: HIV T32 (Child)

Program: Research Fellowship Program (RFP)

Fellowship: Adolescent/Young Adult Biobehavioral HIV T32

Graduate School: Boston College

Internship Program: N/A



Clinical Interests: N/A

Research Interests: My research interests are around children lacking parental care in low-resource context, including those in residential care institutions and the reintegration of children into families.

Lesley Norris, PhD

Contact: lesley_norris@brown.edu

Postdoc Emphasis: Child T32

Program: Research Fellowship Program (RFP)

Fellowship: Child Mental Health T32

Graduate School: Temple University

Internship Program: Alpert Medical School of Brown University



Clinical Interests: Application of exposure- and acceptance-based interventions for youth with anxiety and related disorders.

Research Interests: The identification of factors associated with response to youth interventions and precision intervention development for youth with anxiety and related disorders



Nkechi Okpara, PhD

Contact: nkechi_okpara@brown.edu

Postdoc Emphasis: Beh Med T32

Program: Research Fellowship Program (RFP)

Fellowship: Cardiovascular Behavioral Medicine T32

Graduate School: University of South Carolina, Arnold School of Public Health

Internship Program: n/a

Clinical Interests: N/A

Research Interests: Nutrition education and body image among Black/African American Teenage girls.



Kathryn Parisi, PhD

Contact: kathryn_parsi@brown.edu

Postdoc Emphasis: Child (CCPSP)

Program: Clinical Child Psychology Specialty Program (CCPSP)

Fellowship: Early Childhood

Graduate School: University of Arkansas

Internship Program: University of Mississippi Medical Center

Clinical Interests: Roles of caregivers and stakeholders in cognitive-behavioral approaches for at-risk children, including policy and costs associated with consultation and dissemination in infant and early childhood mental health.

Research Interests: Dissemination and implementation of evidence-based prevention for young children in community settings.

Sarah Prieto, PhD

Contact: sarah_prieto@brown.edu

Postdoc Emphasis: Neuro (CNSP)

Program: Clinical Neuropsychology Specialty Program (CNSP)

Fellowship: Alzheimer's Disease and Related Dementias

Graduate School: Ohio State University

Internship Program: Alpert Medical School of Brown University



Clinical Interests: Using neuropsychological assessments in neurodegenerative, neurological, and medically complex populations, particularly in mid to late life.

Research Interests: Investigating the impact of chronic and traumatic stressors on cognitive and outcomes.

Destiny Printz Pereira, PhD

Contact: destiny_printz_pereira@brown.edu

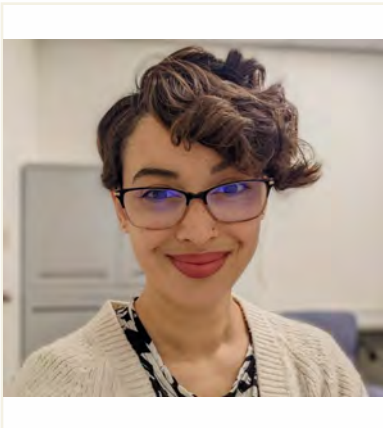
Postdoc Emphasis: STAR T32

Program: Research Fellowship Program (RFP)

Fellowship: Childhood Stress, Trauma, and Resilience T32

Graduate School: University of Connecticut

Internship Program: Greater Hartford Clinical Psychology Consortium



Clinical Interests: Promoting wellbeing in families exposed to trauma and childhood adversity, with an emphasis on Black, Latine, and urban low-income families from pregnancy to prekindergarten.

Research Interests: Equitable and sustainable treatment of traumatic stress and chronic health outcomes, focused on intergenerational, transdiagnostic, and biopsychosocial mechanisms of risk and resilience.

Esther Quiroz Santos, PhD

Contact: esther_quiroz_santos@brown.edu

Postdoc Emphasis: Adult (CPP)

Program: Clinical Psychology Program (CPP)

Fellowship: General Mental Health

Graduate School: University of Rhode Island

Internship Program: University of Miami/Jackson Health System

Clinical Interests: Mood disorders, substance use disorders, and trauma.

Research Interests: Implementation of EBPs, particularly among diverse populations.

Ana Rabasco, PhD

Contact: ana_rabasco@brown.edu

Postdoc Emphasis: Suicide T32

Program: Research Fellowship Program (RFP)

Fellowship: Suicide Research T32

Graduate School: Fordham University (Rosehill)

Internship Program: Alpert Medical School of Brown University

Clinical Interests: Use of evidence-based treatments, including DBT and ACT, for treatment of suicidality and emotion dysregulation, with a focus on adults with serious mental illness.

Research Interests: Development of social and contextually-based interventions for adults at high risk for suicide, with a focus on individuals with serious mental illness.

Daliah Ross, PhD

Contact: daliah_ross@brown.edu

Postdoc Emphasis: Neuro (CNSP)

Program: Clinical Neuropsychology Specialty Program (CNSP)

Fellowship: Geriatric Neuropsychology

Graduate School: Ferkauf Graduate School of Psychology Yeshiva University

Internship Program: University of California, San Diego/VA San Diego

Clinical Interests: Neuropsychological assessment of adults and older adults with complex medical and neurological conditions, with a particular interest in differential diagnosis of neurodegenerative disorders.

Research Interests: Use of neuropsychological and neuroimaging tools to understand differential cognitive aging, including to aid in early detection, prognosis, and treatment of neurodegenerative disorders.

Danusha Selva Kumar, PhD

Contact: danusha_selva_kumar@brown.edu

Postdoc Emphasis: Beh Med

Program: Research Fellowship Program (RFP)

Fellowship: Behavioral Intervention for Cardiovascular Health

Graduate School: Fordham University (Rosehill)

Internship Program: Alpert Medical School of Brown University

Clinical Interests: Providing evidence-based and third-wave treatments among individuals with comorbid mental illness and substance use or other chronic illness.

Research Interests: Understanding barriers to health behavior change especially among individuals traditionally underserved with the goal of providing effective interventions to reduce health disparities.

Stephanie Shoppell, PsyD

Contact: stephanie_shoppell@brown.edu

Postdoc Emphasis: Child (CCPSP)

Program: Clinical Child Psychology Specialty Program (CCPSP)

Fellowship: Adolescent Forensic and Addiction Psychology

Graduate School: William James College

Internship Program: Mental Health Center

Clinical Interests: Role of psychology in the family and juvenile court system, as well as adolescents with co-occurring disorders.

Research Interests: Impact of treatment on recidivism rates of juveniles with a substance use history.

Alexis Smith, PsyD

Contact: alexis_smith1@brown.edu

Postdoc Emphasis: Child (CCPSP)

Program: Clinical Child Psychology Specialty Program (CCPSP)

Fellowship: Clinical Child and Adolescent Outpatient Treatment

Graduate School: Mercer University

Internship Program: National Psychology Consortium: Royal Oaks/Compass

Clinical Interests: Psychological assessment for all ages and integrative therapeutic intervention for youth and families with a passion for interpersonal functioning.

Research Interests: Access to care, culturally adapted assessment and treatment, and psychological functioning in medical populations.

Molly Split, PhD

Contact: molly_split@brown.edu

Postdoc Emphasis: Neuro (CNSP)

Program: Clinical Neuropsychology Specialty Program (CNSP)

Fellowship: Alzheimer's Disease and Related Dementias

Graduate School: Drexel University

Internship Program: Emory University School of Medicine Internship in

Clinical Interests: Role of neuropsychology in the context of multidisciplinary care (i.e., diagnosis and treatment) for general medical and geriatric neuropsychological referrals.

Research Interests: Improving methodologies for early diagnosis and treatment of Alzheimer's disease and related dementias.

Mackenzie Stabile, PhD

Contact: mackenzie_stabile@brown.edu

Postdoc Emphasis: Neuro (CNSP)

Program: Clinical Neuropsychology Specialty Program (CNSP)

Fellowship: Neuropsychology/Geropsychology

Graduate School: University of Connecticut

Internship Program: MUSC/Charleston Consortium

Clinical Interests: Adult and geriatric neuropsychological assessment, with a particular interest in cortical syndromes.

Research Interests: Psycholinguistics and cognition in neurological and neurodevelopmental disorders; the utility of examining qualitative features of language to inform diagnosis and treatment.

Lindsay Stager, PhD

Contact: lindsay_stager@brown.edu

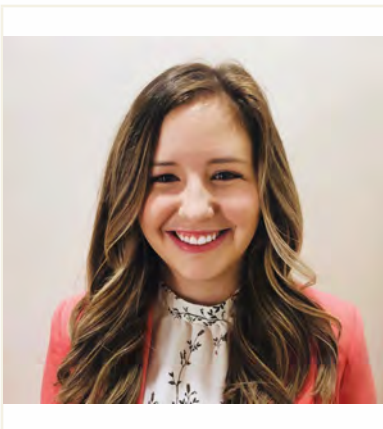
Postdoc Emphasis: Beh Med T32

Program: Research Fellowship Program (RFP)

Fellowship: Cardiovascular Behavioral Medicine T32

Graduate School: University of Alabama at Birmingham

Internship Program: Alpert Medical School of Brown University



Clinical Interests: Behavioral health and family based interventions with a focus in pediatric behavioral sleep medicine, psychology in multidisciplinary team settings, and the use of CBT alongside other evidence based intervention strategies.

Research Interests: 1) The relationship between sleep and cognitive function and the related clinical implications, particularly in vulnerable populations (ex. adolescents with chronic health conditions) 2) The impact of stigma on adolescent health.

Allison Stumper, PhD

Contact: allison_stumper@brown.edu

Postdoc Emphasis: HIV T32 /Child T32

Program: Research Fellowship Program (RFP)

Fellowship: Adolescent/Young Adult Biobehavioral HIV T32 / Child Mental Health Research T32

Graduate School: Temple University

Internship Program: Alpert Medical School of Brown University



Clinical Interests: Broadly women's mental health and the integration of CBT and third-wave therapies.

Research Interests: Understanding sex differences in the emergence and exacerbation of mood disorders during adolescence to determine mechanisms through which hormonal changes such as puberty and menstruation confer risk.

Matthew Thompson, PhD

Contact: matthew_f_thompson@brown.edu

Postdoc Emphasis: HIV T32 (Adult)

Program: Research Fellowship Program (RFP)

Fellowship: Adolescent/Young Adult Biobehavioral HIV T32

Graduate School: Uniformed Services University

Internship Program: Alpert Medical School of Brown University

Clinical Interests: Application of evidence-based and recovery-oriented approaches for individuals at risk for suicide, including those with co-occurring substance use disorders and severe mental illness.

Research Interests: Examining biopsychosocial factors underpinning the etiology and treatment of suicide and co-occurring disorders, particularly among underserved populations.

Selene Tobin, PhD

Contact: selene_tobin@brown.edu

Postdoc Emphasis: Beh Med T32

Program: Research Fellowship Program (RFP)

Fellowship: Cardiovascular Behavioral Medicine T32

Graduate School: University of Utah

Internship Program: n/a

Clinical Interests: n/a

Research Interests: Understanding the role of lifestyle behaviors on energy balance.



Zoe Trout, PsyD

Contact: zoe_trout@brown.edu

Postdoc Emphasis: Adult (CPP)

Program: Clinical Psychology Program (CPP)

Fellowship: Trauma and Readjustment Clinic

Graduate School: Baylor University

Internship Program: VA Central Western Massachusetts Healthcare System

Clinical Interests: Transdiagnostic treatment approaches, PTSD and trauma-related symptoms, and clinical interventions for shame, guilt, and self-disgust, particularly among trauma-affected populations.

Research Interests: Self-conscious emotions such as shame, guilt, and self-disgust and their role in treatment engagement and outcomes.



Jacob Varela, PsyD

Contact: jacob_varela@brown.edu

Postdoc Emphasis: Neuro (CNSP)

Program: Clinical Neuropsychology Specialty Program (CNSP)

Fellowship: Neuropsychology

Graduate School: Regent University

Internship Program: Missouri Health Sciences Psychology Consortium

Clinical Interests: Conducting comprehensive neuropsychological assessments for a broad array of neurological concerns and conditions. Interested in neurodegenerative diseases, as well as epilepsy and movement disorders. Specific areas of interest include pre- and post-surgical evaluations, intracarotid sodium amobarbital procedure (Wada procedure), differential diagnostic evaluations, and inpatient consultation.

Research Interests: Clinically relevant research in areas such as the development of performance validity indicators, evaluating the correlation between neuropsychological performance and neuroimaging in the epilepsy population, and development of mobile technology interventions for various neurological conditions.



Gemma Wallace, PhD

Contact: gemma_wallace@brown.edu

Postdoc Emphasis: Suicide T32

Program: Research Fellowship Program (RFP)

Fellowship: Suicide Research T32

Graduate School: Colorado State University

Internship Program: Alpert Medical School of Brown University

Clinical Interests: Emotion regulation, self-injurious and suicidal thoughts and behaviors, substance use and misuse, and improving the accessibility of mental health services for underserved populations.

Research Interests: Affective, cognitive, and socioenvironmental mechanisms underlying suicidality and substance misuse, EMA and EMI methodologies, and implications for treatment.



Briana Williams, PhD

Contact: briana_williams@brown.edu

Postdoc Emphasis: Child (CCPSP)

Program: Clinical Child Psychology Specialty Program (CCPSP)

Fellowship: Early Childhood

Graduate School: Michigan State University

Internship Program: Ochsner Psychology Doctoral Internship

Clinical Interests: Reducing barriers to access intervention, assessment, and consultation to young children and their families in early childhood, especially for families from minoritized backgrounds.

Research Interests: The role of parental mental health in supporting young children's social-emotional outcomes in early childhood and its impact on children's long-term adjustment.
