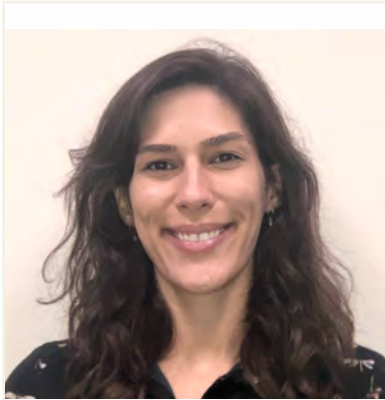




Postdoctoral Fellows 2023-2024



Maria Accavitti, PhD

Contact: maria_accavitti@brown.edu

Postdoc Emphasis: Child (CCPSP)

Program: Clinical Child Psychology Specialty Program (CCPSP)

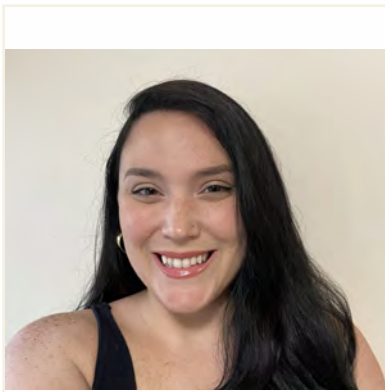
Fellowship: Early Childhood

Graduate School: University of Virginia

Internship Program: Mailman Center for Child Development

Clinical Interests: My clinical interests include infant and early childhood mental health consultation, intervention, and assessment services.

Research Interests: My research interests include understanding and promoting racial and social equity in access to high quality early childhood education and mental health services.



Michelle Aiello, PhD

Contact: michelle_aiello@brown.edu

Postdoc Emphasis: Child

Program: Research Fellowship Program (RFP)

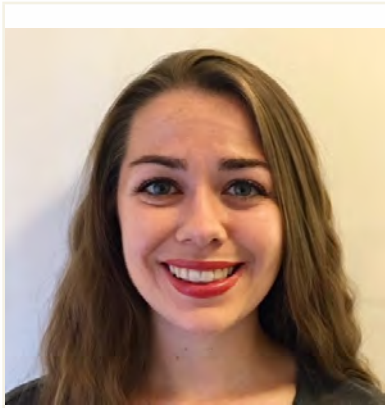
Fellowship: Adolescent Psychopathology and Psychotherapy

Graduate School: Georgia State University

Internship Program: Emory University CAPS

Clinical Interests: Providing culturally affirming interventions and community-based care for Latinx/e clients affected by relational and systemic stressors.

Research Interests: Investigating culturally affirming interventions that may improve therapeutic outcomes for Latinx/e communities, in addition to exploring factors that may have a positive effect on racial and ethnic marginalized students' identity development in educational settings.



Ariana Albanese, PhD

Contact: ariana_albanese@brown.edu

Postdoc Emphasis: Adult Beh Med Child

Program: Research Fellowship Program (RFP)

Fellowship: Implementation Science

Graduate School: Drexel University

Internship Program: Alpert Medical School of Brown University

Clinical Interests: Evidence-based treatment of comorbid psychiatric and medical conditions, particularly psychological distress in the context of reproductive events.

Research Interests: Clarifying the factors impacting parental-child well-being during pregnancy and postpartum, and the development of interventions to better support parents through the postpartum transition.



Kira Alexander, PhD

Contact: kira_alexander@brown.edu

Postdoc Emphasis: Child (CCPSP)

Program: Clinical Child Psychology Specialty Program (CCPSP)

Fellowship: Adolescent Acute Care Services for Addiction and High-Risk Behaviors

Graduate School: University of Central Arkansas

Internship Program: Hawaii Psychology Internship Consortium

Clinical Interests: Trauma-informed care and solution-focused interventions through counseling, diagnostic assessment refinement, and program development for marginalized and high-risk youth and adolescent populations.

Research Interests: Minimization of the achievement gap for minority and marginalized populations across multiple domains and development of trauma-focused interventions across the lifespan with an emphasis on early childhood and adolescence.



Cara Antonaccio, PhD

Contact: cara_antonaccio@brown.edu

Postdoc Emphasis: Child

Program: Research Fellowship Program (RFP)

Fellowship: Implementation Science and Global Mental Health

Graduate School: Boston College School of Social Work

Internship Program: n/a

Clinical Interests: Post-traumatic stress in communities affected by adversity; mental health and psychosocial support interventions for conflict- and cancer-affected youth and families.

Research Interests: Evaluating the implementation outcomes of transdiagnostic mental health interventions for youth and families affected by conflict and other forms of adversity; pediatric psychosocial oncology in the context of treatment and survivorship.



Amanda Arulpragasam, PhD

Contact: amanda_arulpragasam@brown.edu

Postdoc Emphasis: Adult

Program: Research Fellowship Program (RFP)

Fellowship: Neuroimaging and Neuromodulation

Graduate School: Emory University

Internship Program: Dartmouth-Hitchcock Medical Center

Clinical Interests: Mood and anxiety disorders (PTSD).

Research Interests: Neurobiology of motivation and decision-making and development of treatments.



Rojan Bagheri, PhD

Contact: rojan_bagheri@brown.edu

Postdoc Emphasis: Adult (CPP)

Program: Clinical Psychology Program (CPP)

Fellowship: Trauma and Readjustment Clinic

Graduate School: University of Houston

Internship Program: Boston University School of Medicine

Clinical Interests: Therapeutic assessment and treatment of those with complex psychiatric conditions using integrated, holistic, culturally-sensitive evidence-based treatment; psychodynamic, CBT, and third-wave approaches, particularly ACT.

Research Interests: Examining the impact of motivation and goal-setting in treatment; treatment non-response and diagnostic efficiency involving those with trauma, personality, anxiety and mood disorders, and co-occurring suicidal thoughts and behaviors.



Andrew Barnett, PhD

Contact: andrew_barnett@brown.edu

Postdoc Emphasis: HIV T32 (Child)

Program: Research Fellowship Program (RFP)

Fellowship: Adolescent/Young Adult Biobehavioral HIV Research T32

Graduate School: George Washington University

Internship Program: Alpert Medical School of Brown University

Clinical Interests: Cognitive-behavioral therapy with children and adolescents with comorbid medical conditions.

Research Interests: Behavioral factors associated with HIV risk among adolescents



Madeline Benz, PhD

Contact: madeline_benz@brown.edu

Postdoc Emphasis: Suicide T32

Program: Research Fellowship Program (RFP)

Fellowship: Suicide Research T32

Graduate School: Clark University

Internship Program: Alpert Medical School of Brown University

Clinical Interests: Addiction, Post-traumatic Stress Disorder, and their co-occurrence.

Research Interests: Risk assessment, prevention, and intervention for suicidal behaviors and accidental injury in the context of substance use for individuals with substance use disorders and co-occurring mental health conditions.



Nicholas Canby, PhD

Contact: nicholas_canby@brown.edu

Postdoc Emphasis: Adult

Program: Research Fellowship Program (RFP)

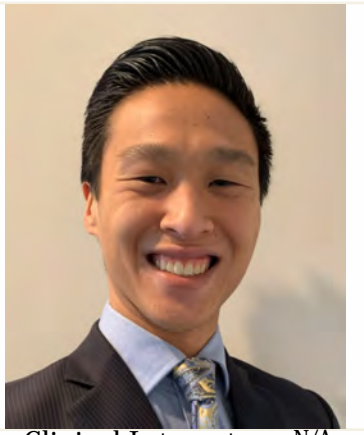
Fellowship: Interdisciplinary Mindfulness and Meditation Research

Graduate School: Clark University

Internship Program: Southern Arizona VA Health Care System

Clinical Interests: Treating patients with trauma, religious/existential issues, dissociation, couples.

Research Interests: Mindfulness meditation, anomalous and dissociative experiences, mechanisms and moderators of psychological treatments, psychology of religion, and intimacy.



Lawrence Chan, PsyD

Contact: lawrence_m_chan@brown.edu

Postdoc Emphasis: Neuro (CNSP)

Program: Clinical Neuropsychology Specialty Program (CNSP)

Fellowship: Neuropsychology and Intervention

Graduate School: William James College

Internship Program: Phoenix VA Health Care System

Clinical Interests: N/A

Research Interests: N/A



Alexandrea Craft, PhD

Contact: alexandrea_craft@brown.edu

Postdoc Emphasis: Child T32

Program: Research Fellowship Program (RFP)

Fellowship: Child Mental Health Research T32

Graduate School: University of Massachusetts - Amherst

Internship Program: Children's Hospital of Philadelphia

Clinical Interests: Dr. Craft's clinical interests include perinatal mental health, infant mental health, and early childhood trauma. Dr. Craft utilizes both developmentally and culturally informed approaches in working with patients from diverse backgrounds.

Research Interests: Dr. Craft's research interests focus on prenatal influences of infant development, child mental health and family functioning. She is interested in developing programs and services to support children and families at risk for poor developmental and mental health outcomes.



Margaret Crane, PhD

Contact: margaret_crane@brown.edu

Postdoc Emphasis: Child

Program: Research Fellowship Program (RFP)

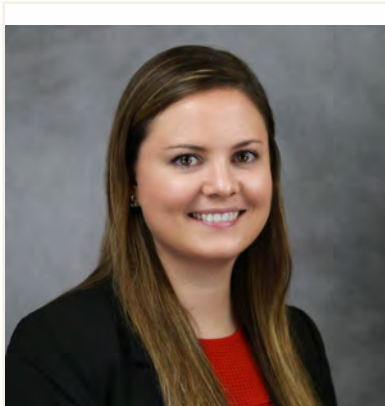
Fellowship: Implementation Science

Graduate School: Temple University

Internship Program: New York Presbyterian-Weill Cornell Medicine

Clinical Interests: Cognitive behavioral therapy for youth anxiety and OCD; Parent coaching.

Research Interests: Dissemination and implementation of evidence-based interventions, policy, direct-to-consumer marketing, key opinion leaders.



Grace Cushman, PhD

Contact: grace_cushman@brown.edu

Postdoc Emphasis: F32 (Child) / Child T32

Program: Research Fellowship Program (RFP)

Fellowship: F32 (Child)

Child Mental Health Research T32

Graduate School: University of Georgia

Internship Program: Alpert Medical School of Brown University

Clinical Interests: Improving psychosocial functioning among youth with chronic illnesses.

Research Interests: Examining medication adherence within pediatric illness samples with the goal of improving families' abilities to adhere to treatment recommendations.



Sarah Dreyer-Oren, PhD

Contact: sarah_dreyer-oren@brown.edu

Postdoc Emphasis: Adult, Beh Med

Program: Research Fellowship Program (RFP)

Fellowship: Addiction & Physical Activity Research

Graduate School: Miami University

Internship Program: Ann Arbor VA Healthcare System

Clinical Interests: Dialectical Behavior Therapy, Motivational Interviewing and Harm Reduction for SUD, Exposure therapy for anxiety and OC-spectrum disorders.

Research Interests: Substance use disorder and mood/anxiety disorder comorbidities, positive emotion regulation.



Kristine Durkin, PhD

Contact: kristine_durkin@brown.edu

Postdoc Emphasis: Child T32

Program: Research Fellowship Program (RFP)

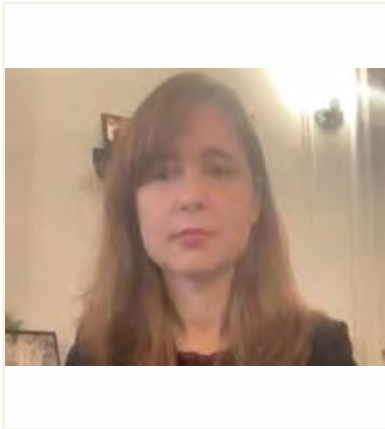
Fellowship: Child Mental Health Research T32

Graduate School: West Virginia University

Internship Program: Alpert Medical School of Brown University

Clinical Interests: Evidence-based evaluations and interventions to foster adjustment to diagnosis, quality of life, and psychosocial functioning in pediatric patients.

Research Interests: Development and evaluation of behavioral interventions to promote self-management of chronic illness across the child's lifespan (e.g., adherence to medication, transfer of responsibility from caregiver to child, readiness to transition to adult care).



Elizabeth Eder-Moreau, PhD

Contact: elizabeth_eder-moreau@brown.edu

Postdoc Emphasis: Adult (CPP)

Program: Clinical Psychology Program (CPP)

Fellowship: Perinatal Mental Health

Graduate School: Fordham University Graduate School of Education

Internship Program: Boston University School of Medicine

Clinical Interests: Women's mental health, maternal mental health outcomes, peri and postnatal mental health, immigration and acculturation stress, and trauma.

Research Interests: Women's mental health, including peri and postnatal mental health, sex differences in trauma and psychopathology, the intersection of identities on maternal mental health and outcomes, and gender differences in acculturation stress.



Deanna Eilenberger, PsyD

Contact: deanna_eilenberger@brown.edu

Postdoc Emphasis: Neuro (CNSP)

Program: Clinical Neuropsychology Specialty Program (CNSP)

Fellowship: Neuropsychology

Graduate School: Immaculata University

Internship Program: Phoenix VA Health Care System

Clinical Interests: Role of neuropsychological evaluation in differential diagnosis of neurodegenerative disorders and provision of resources to increase quality of life in geriatric populations.

Research Interests: Investigation of modifiable risk factors of cognitive decline and neuropsychological sequelae of various neurodegenerative conditions.



Erick Fedorenko, PhD

Contact: erick_fedorenko@brown.edu

Postdoc Emphasis: STAR T32

Program: Research Fellowship Program (RFP)

Fellowship: Childhood Stress, Trauma, and Resilience T32

Graduate School: Rutgers University NJ-Piscataway/New Brunswick

Internship Program: Alpert Medical School of Brown University

Clinical Interests: Cognitive-behavioral and acceptance-based interventions for anxiety, OCD, PTSD, and related disorders.

Research Interests: The cognitive-affective and neural processes involved in the etiology and treatment of fear-related and distress-related disorders.



Natalie Fenn, PhD

Contact: natalie_fenn@brown.edu

Postdoc Emphasis: HIV T32 (Adult)

Program: Research Fellowship Program (RFP)

Fellowship: Adolescent/Young Adult Biobehavioral HIV T32

Graduate School: University of Rhode Island

Internship Program: Alpert Medical School of Brown University

Clinical Interests: Interprofessional primary care models, adult mental and behavioral health, intervention and prevention methods for high-risk populations and trauma survivors.

Research Interests: Biosychosocial determinants of health; utilizing civic engagement principles to improve health behaviors among understudied populations.



Yohansa Fernández, PhD

Contact: yohansa_fernandez@brown.edu

Postdoc Emphasis: HIV T32 (Adult)

Program: Research Fellowship Program (RFP)

Fellowship: Adolescent/Young Adult Biobehavioral HIV Research T32

Graduate School: New York University, Silver School of Social Work

Internship Program: N/A - Social Work

Clinical Interests: N/A

Research Interests: Communities of trans-experience; people who inject drugs; engagement in HIV prevention and treatment; syndemics; intersectionality.



Katelyn Fox, PhD

Contact: katelyn_fox@brown.edu

Postdoc Emphasis: Child

Program: Research Fellowship Program (RFP)

Fellowship: Pediatric Weight Control

Graduate School: University of Rhode Island

Internship Program: n/a

Clinical Interests: Pediatric nutrition, behavioral interventions for the prevention and treatment of childhood obesity.

Research Interests: Understanding contextual factors that influence the development of eating behavior and dietary intake to inform sustainable, equitable interventions and policies to prevent and treat childhood obesity. Promoting the adoption and integration of evidenced based practices, interventions, and policies into healthcare and public health settings to prevent and treat chronic diseases, such as obesity, and reduce health disparities.



Daniella Furey, PsyD

Contact: daniella_furey@brown.edu

Postdoc Emphasis: Adult (CPP)

Program: Clinical Psychology Program (CPP)

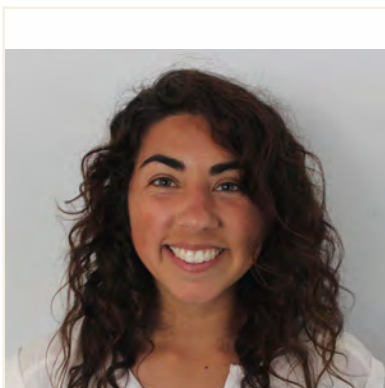
Fellowship: Trauma and Readjustment Clinic

Graduate School: William James College

Internship Program: Central Western MA VA Health Care System - MH

Clinical Interests: Readjustment and recovery from PTSD and other trauma-related disorders and treatment interventions for individuals with trauma disorders and comorbid substance use disorders.

Research Interests: The intersection of moral injury and PTSD, exploring existent trauma treatments and their implications for diagnosis and treatment of Moral Injury.



Alyssa Gatto, PhD

Contact: alyssa_gatto@brown.edu

Postdoc Emphasis: Child T32

Program: Research Fellowship Program (RFP)

Fellowship: Child Mental Health Research T32

Graduate School: Virginia Tech

Internship Program: Alpert Medical School of Brown University

Clinical Interests: Providing evidence-based services to underserved and justice-involved adolescents.

Research Interests: Brief technology-based emotion regulation prevention programs for adolescents.



Sugandha Gupta, PhD

Contact: sugandha_gupta@brown.edu

Postdoc Emphasis: Beh Med T32

Program: Research Fellowship Program (RFP)

Fellowship: Cardiovascular Behavioral Medicine T32

Graduate School: City University of New York

Internship Program: Rush University Medical Center

Clinical Interests: Evidence-based and culturally-sensitive health-related interventions for individuals with co-morbid medical and psychological concerns.

Research Interests: Social and cultural contexts that shape health behavior change among communities disproportionately affected by chronic illness, including cardiovascular disease.



Linda Guzman, PhD

Contact: linda_guzman@brown.edu

Postdoc Emphasis: Beh Med

Program: Research Fellowship Program (RFP)

Fellowship: Implementation Science

Graduate School: University of Arkansas - Fayetteville

Internship Program: Alpert Medical School of Brown University

Clinical Interests: The role of psychology within integrated healthcare settings to increase access to behavioral health services for individuals with complex physical and mental health care needs.

Research Interests: Increasing access to mental health care services, with a particular focus on culturally responsive evidence-based treatments for marginalized populations.



Ingrid Hastedt, PhD

Contact: ingrid_hastedt@brown.edu

Postdoc Emphasis: Neuro (CNSP)

Program: Clinical Neuropsychology Specialty Program (CNSP)

Fellowship: Pediatric Neuropsychology

Graduate School: University of Massachusetts Boston

Internship Program: Nicklaus Children's Hospital

Clinical Interests: Neuropsychological assessment of children with various medical, neurodevelopmental, and psychiatric conditions, including assessment of bilingual and Spanish-speaking children.

Research Interests: Brain development and neuropsychological functioning in children with neurodevelopmental disorders, including differences between those exposed to one versus more than one language. Considerations for neuropsychological assessment of bi/multilingual children.



April Highlander, PhD

Contact: april_highlander@brown.edu

Postdoc Emphasis: Child T32

Program: Research Fellowship Program (RFP)

Fellowship: Child Mental Health Research T32

Graduate School: University of North Carolina - Chapel Hill

Internship Program: Western Psychiatric Hospital

Clinical Interests: Family-based treatments for emotional and behavioral dysregulation in children and adolescents.

Research Interests: Psychosocial mechanisms of externalizing disorders and risk factors related to disparities in care.



Caroline Hinkle, PhD

Contact: caroline_hinkle@brown.edu

Postdoc Emphasis: Neuro (CNSP)

Program: Clinical Neuropsychology Specialty Program (CNSP)

Fellowship: Neuropsychology/Geropsychology

Graduate School: University of Maryland - Baltimore

Internship Program: VAMHCS/UM SOM Psychology Internship Consortium

Clinical Interests: Dementia evaluation; medical neuropsychology; delirium.

Research Interests: Medical neuropsychology; aging; neural correlates of cognition.



Kimberly Hudson, PsyD

Contact: kimberly_hudson1@brown.edu

Postdoc Emphasis: Adult (CPP)

Program: Clinical Psychology Program (CPP)

Fellowship: Serious Mental Illness (PRRC & Homeless-PACT) -
Mental Health.

Graduate School: William James College

Internship Program: Edward P. Boland Department of Veterans Affairs

Clinical Interests: Serious and persistent mental health disorders, trauma-informed care, crisis intervention, substance use recovery, and community reintegration. Particularly passionate about providing strengths-based, recovery-oriented services to Veterans and underserved populations with serious mental health challenges, including those diagnoses with PTSD/MST and SM! to fight against longstanding stigma and misconceptions of those seeking care.

Research Interests: Modifications in Evidence Based treatments to meet needs of diverse and underserved populations with co-occurring diagnoses (e.g., substance use disorders, mood, SM!, and trauma). Community engagement and delivery of mental health services to Veterans. Program evaluation of current/existing services to Veterans including ways to improve access to care via telehealth. Development and evaluation of behavioral interventions for individuals with first time psychosis/psychotic disorders. Additional interest includes high-risk/suicidal clients including older adults, trauma/PTSD/MST, mood-disorders, SM!, and chronic pain.



Katherine Ingram, PhD

Contact: katherine_ingram@brown.edu

Postdoc Emphasis: STAR T32

Program: Research Fellowship Program (RFP)

Fellowship: Childhood Stress, Trauma, and Resilience T32

Graduate School: University of North Carolina - Chapel Hill

Internship Program: Johns Hopkins University School of Medicine and
Kennedy Kriener

Clinical Interests: Dialectical evidence-based practices for treating traumatic stress and high-risk behavior among children and adolescents in acute care and high-need settings.

Research Interests: Role of traumatic stress in self-harm and suicidality among children and adolescents and evidence based acute care services for this patient population.



Ann Inouye, PsyD

Contact: ann_inouye@brown.edu

Postdoc Emphasis: Adult (CPP)

Program: Clinical Psychology Program (CPP)

Fellowship: Acceptance and Commitment Therapy (ACT), Trauma
and PTSD Focused

Graduate School: Hawaii School of Professional Psychology at
Chaminade University

Internship Program: University of Texas Health at San Antonio

Clinical Interests: Application of mindfulness and acceptance-based interventions with individuals with trauma and trauma-related disorders including emotional dysregulation, substance use, and mood disorders.

Research Interests: Psychedelic assisted therapy for the treatment of trauma and emotion dysregulation.



Sarah Joelson, PsyD

Contact: sarah_joelson@brown.edu

Postdoc Emphasis: Child (CCPSP)

Program: Clinical Child Psychology Specialty Program (CCPSP)

Fellowship: Pediatric Psychology

Graduate School: Palo Alto University

Internship Program: Lincoln Hospital/Weill Cornell Medicine

Clinical Interests: Treating anxiety/depression and trauma-related symptoms in children with medical co-morbidities.

Research Interests: Increasing access to mental health care for marginalized youth and families with medical conditions.



Shereen Khoo, PhD

Contact: shereen_khoo@brown.edu

Postdoc Emphasis: Adult / Adult (APA)

Program: Clinical Psychology Program (CPP) (23-24) / Research

Fellowship: Acceptance and Commitment Therapy (ACT) (23-24)
Methods to Improve Diagnostic Assessment and

Graduate School: University of Notre Dame

Internship Program: Alpert Medical School of Brown University

Clinical Interests: Transdiagnostic, emotion-based treatments of internalizing disorders, including borderline personality disorder.

Research Interests: Personality, psychopathology, and predictors of treatment outcome.



Michaela Koveleskie, PsyD

Contact: michaela_koveleskie@brown.edu

Postdoc Emphasis: Neuro (CNSP)

Program: Clinical Neuropsychology Specialty Program (CNSP)

Fellowship: Geriatric Neuropsychology

Graduate School: Xavier University

Internship Program: Missouri Health Sciences Psychology Consortium

Clinical Interests: My clinical interests include geriatrics, cognitive functioning in individuals with psychotic spectrum disorders, and the intersection between medical complexities and neuropsychological conditions.

Research Interests: My primary research interest is in assessment, the development of appropriate norms, and test development.



Gina Mason, PhD

Contact: gina_mason@brown.edu

Postdoc Emphasis: Child

Program: Research Fellowship Program (RFP)

Fellowship: Sleep, Sleep Loss and the Neuroscience of Attention and Learning in Children

Graduate School: Cornell University

Internship Program: n/a

Clinical Interests: N/A

Research Interests: Influence of sleep restriction on brain connectivity, hyperactivity/impulsivity, and memory consolidation in neurotypical children and children with underlying neurodevelopmental conditions (ADHD, autism)



Sarah Merrill, PhD

Contact: sarah_merrill@brown.edu

Postdoc Emphasis: Child

Program: Research Fellowship Program (RFP)

Fellowship: Parenting Science and Epigenomics

Graduate School: Cornell University

Internship Program: n/a

Clinical Interests: N/A

Research Interests: Application of DNA methylation as a measure for assessing the biological implications of psychosocial intervention, especially when coupled with physiologically proximal aspects such as sleep. In addition, characterizing and comparing the best methodologies for assessing and interpreting DNA methylation and biological embedding findings in these contexts.



Jiwon Min, PhD

Contact: jiwon_min@brown.edu

Postdoc Emphasis: Adult

Program: Research Fellowship Program (RFP)

Fellowship: Behavioral Medicine and Addictions Research -
Quantitative Methods Focus

Graduate School: Oklahoma State University

Internship Program: University of Mississippi Medical Center

Clinical Interests: Transdiagnostic psychological treatment of maladaptive behaviors related to personality disorders (e.g., substance use, nonsuicidal self-injury).

Research Interests: Digital mental health; development, evaluation, and optimization of technology-assisted psychological interventions for maladaptive behaviors related to personality disorders (e.g., substance use, nonsuicidal self-injury).



Nauder Namaky, PhD

Contact: nauder_namaky@brown.edu

Postdoc Emphasis: Suicide T32

Program: Research Fellowship Program (RFP)

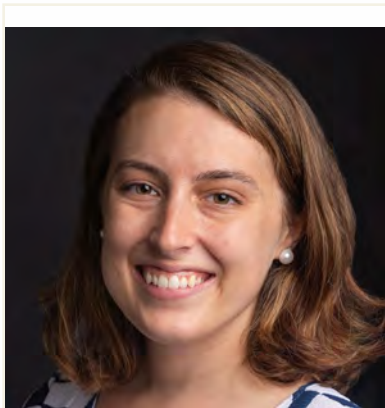
Fellowship: Suicide Research T32

Graduate School: University of Virginia

Internship Program: Alpert Medical School of Brown University

Clinical Interests: Evidence-based treatment of moderate-to-severe affective disorders and the integration of social support partners into treatment for individual psychopathology.

Research Interests: Approach and avoidance motivation in affective disorders and social processes that augment these motivations.



Sarah Neville, PhD

Contact: sarah_neville@brown.edu

Postdoc Emphasis: HIV T32 (Child)

Program: Research Fellowship Program (RFP)

Fellowship: Adolescent/Young Adult Biobehavioral HIV T32

Graduate School: Boston College

Internship Program: N/A

Clinical Interests: N/A

Research Interests: My research interests are around children lacking parental care in low-resource context, including those in residential care institutions and the reintegration of children into families.



Lesley Norris, PhD

Contact: lesley_norris@brown.edu

Postdoc Emphasis: Child T32

Program: Research Fellowship Program (RFP)

Fellowship: Child Mental Health T32

Graduate School: Temple University

Internship Program: Alpert Medical School of Brown University

Clinical Interests: Application of exposure- and acceptance-based interventions for youth with anxiety and related disorders.

Research Interests: The identification of factors associated with response to youth interventions and precision intervention development for youth with anxiety and related disorders



Miguel Nunez, PhD

Contact: miguel_nunez@brown.edu

Postdoc Emphasis: Child (CCPSP)

Program: Clinical Child Psychology Specialty Program (CCPSP)

Fellowship: Adolescent Forensic and Addiction Psychology

Graduate School: University of Cincinnati

Internship Program: Alpert Medical School of Brown University

Clinical Interests: The application of psychological knowledge to the civil, juvenile, and criminal justice systems.

Research Interests: The identification of mechanisms underlying resilience, and their translation into interventions, among youth in out-of-home care and justice-involved individuals.



Nkechi Okpara, PhD

Contact: nkechi_okpara@brown.edu

Postdoc Emphasis: Beh Med T32

Program: Research Fellowship Program (RFP)

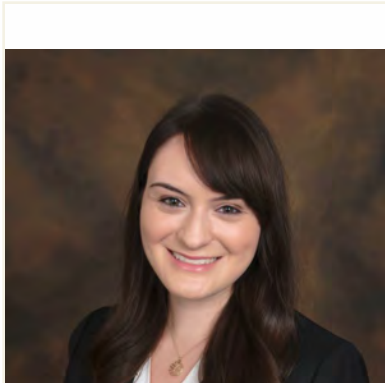
Fellowship: Cardiovascular Behavioral Medicine T32

Graduate School: University of South Carolina, Arnold School of Public Health

Internship Program: n/a

Clinical Interests: N/A

Research Interests: Nutrition education and body image among Black/African American Teenage girls.



Elizabeth Olsen, MD

Contact: elizabeth_olsen@brown.edu

Postdoc Emphasis: HIV T32 (Adult)

Program: Research Fellowship Program (RFP)

Fellowship: Adolescent/Young Adult Biobehavioral HIV T32

Graduate School: Stony Brook School of Medicine

Internship Program: Brown University Adult Psychiatry Residency

Clinical Interests: Child & Adolescent Psychiatry: utilizing medication management, lifestyle interventions, and psychotherapeutic techniques to address psychiatric symptoms and diagnoses.

Research Interests: Predictors of adolescent risk behavior for court-involved youth and implications for family-based clinical interventions. Childhood adversity and the intersection between mental and physical health.



Katrina Oselinsky, PhD

Contact: katrina_oselinsky@brown.edu

Postdoc Emphasis: Beh Med T32

Program: Research Fellowship Program (RFP)

Fellowship: Cardiovascular Behavioral Medicine T32

Graduate School: Colorado State University

Internship Program: n/a

Clinical Interests: N/A

Research Interests: Testing novel health-behavior modification interventions to improve rates of physical activity and increase the adoption of other preventative health behaviors for clinical and sub-clinical populations.



Kathryn Parisi, PhD

Contact: kathryn_pari@brown.edu

Postdoc Emphasis: Child (CCPSP)

Program: Clinical Child Psychology Specialty Program (CCPSP)

Fellowship: Early Childhood

Graduate School: University of Arkansas

Internship Program: University of Mississippi Medical Center

Clinical Interests: Roles of caregivers and stakeholders in cognitive-behavioral approaches for at-risk children, including policy and costs associated with consultation and dissemination in infant and early childhood mental health.

Research Interests: Dissemination and implementation of evidence-based prevention for young children in community settings.



Lavinia Pinto, PsyD

Contact: lavinia_pinto@brown.edu

Postdoc Emphasis: Adult (CPP)

Program: Clinical Psychology Program (CPP)

Fellowship: Treatment of Substance Use Disorders and Co-Occurring Mood Disorders

Graduate School: William James College

Internship Program: VA Hudson Valley Health Care System, Montrose

Clinical Interests: Provision of evidence-based treatments for trauma, substance misuse, and related anxiety and mood disorders.

Research Interests: Psychological processes involved in the maintenance of comorbid opioid-misuse and anxiety-related symptoms and disorders.



Justin Preston, PhD

Contact: justin_preston@brown.edu

Postdoc Emphasis: Adult (CPP)

Program: Clinical Psychology Program (CPP)

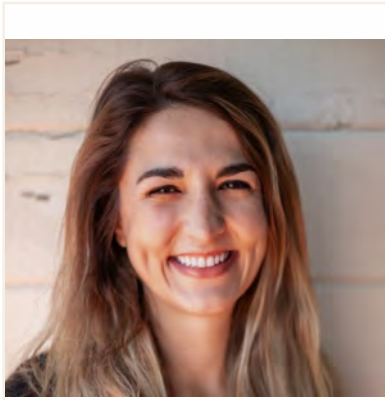
Fellowship: Posttraumatic Stress Disorder (PTSD)

Graduate School: University of Massachusetts - Boston

Internship Program: Erie VA Medical Center

Clinical Interests: Integration of mindfulness, acceptance, and strengths-based approaches to treatment of trauma, PTSD, and moral injury; increasing awareness of social and contextual factors associated with trauma symptom expression and intensity.

Research Interests: Program development, implementation, and evaluation to support healthcare access and sustained engagement; improving care provision by addressing effects of burnout and other stressors in healthcare providers and systems.



Ana Rabasco, PhD

Contact: ana_rabasco@brown.edu

Postdoc Emphasis: Suicide T32

Program: Research Fellowship Program (RFP)

Fellowship: Suicide Research T32

Graduate School: Fordham University (Rosehill)

Internship Program: Alpert Medical School of Brown University

Clinical Interests: Use of evidence-based treatments, including DBT and ACT, for treatment of suicidality and emotion dysregulation, with a focus on adults with serious mental illness.

Research Interests: Development of social and contextually-based interventions for adults at high risk for suicide, with a focus on individuals with serious mental illness.



Kayla Sall, PhD

Contact: kayla_sall@brown.edu

Postdoc Emphasis: Beh Med (CPP)

Program: Clinical Psychology Program (CPP)

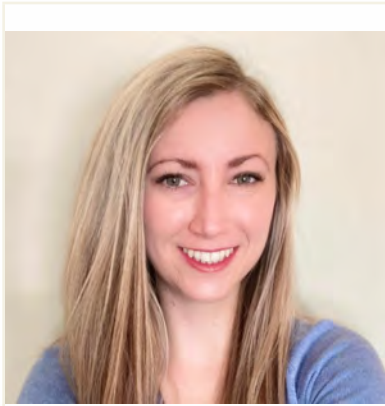
Fellowship: Primary Care Behavioral Health

Graduate School: East Carolina University

Internship Program: Alpert Medical School of Brown University

Clinical Interests: Culturally-tailored (e.g., LGBTQ+, BIPOC) adaptations of behavioral medicine interventions (behavioral weight loss, cardiometabolic diseases, sexual and reproductive health); integrated primary care.

Research Interests: Influences of social determinants of health (minority stressors, trauma/ACEs, and other forms of violence) on behavioral health outcomes among under-resourced, underserved, and/or minoritized populations.



Victoria Sanborn, PhD

Contact: victoria_sanborn@brown.edu

Postdoc Emphasis: Neuro (CNSP)

Program: Clinical Neuropsychology Specialty Program (CNSP)

Fellowship: Aging and Dementia

Graduate School: Kent State University

Internship Program: VA Boston Healthcare System

Clinical Interests: Neuropsychological assessment of adults with neurologic/neurodegenerative disorders.

Research Interests: Evaluating the effects of health behaviors and interventions on the preservation of the aging brain.



Allison Stumper, PhD

Contact: allison_stumper@brown.edu

Postdoc Emphasis: Child T32

Program: Research Fellowship Program (RFP)

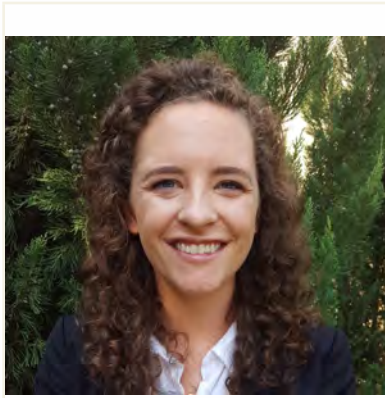
Fellowship: Child Mental Health Research T32

Graduate School: Temple University

Internship Program: Alpert Medical School of Brown University

Clinical Interests: Broadly women's mental health and the integration of CBT and third-wave therapies.

Research Interests: Understanding sex differences in the emergence and exacerbation of mood disorders during adolescence to determine mechanisms through which hormonal changes such as puberty and menstruation confer risk.



Elizabeth Tampke, PhD

Contact: elizabeth_tampke@brown.edu

Postdoc Emphasis: STAR T32 / Child

Program: Research Fellowship Program (RFP)

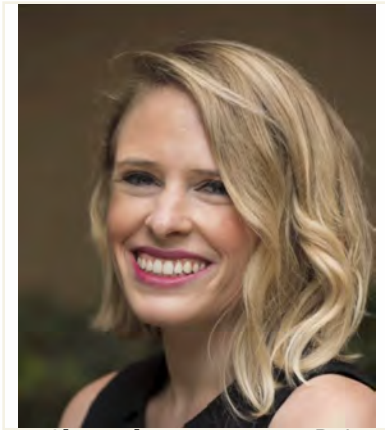
Fellowship: Childhood Stress, Trauma, and Resilience T32 (23-24)
Adolescent Emotion Regulation and Risk Behaviors (22)

Graduate School: University of Kansas

Internship Program: Nebraska Internship Consortium in Professional Psy

Clinical Interests: Aggressive behavior in adolescents.

Research Interests: The development of childhood aggression and how this translates to teen dating violence.



Julia Tejada, PsyD

Contact: julia_lockyer@brown.edu

Postdoc Emphasis: Adult (CPP)

Program: Clinical Psychology Program (CPP)

Fellowship: General Mental Health

Graduate School: Pepperdine University

Internship Program: USC Keck School of Medicine Counseling and Mental

Clinical Interests: Role of psychology in interdisciplinary environment and applying evidence based therapies for mood disorders.

Research Interests: Factors impacting effective supervision and harmful supervision in clinical psychology training.



Katherine Tezanos, PhD

Contact: katherine_tezanos@brown.edu

Postdoc Emphasis: Suicide T32

Program: Research Fellowship Program (RFP)

Fellowship: Suicide Research T32

Graduate School: Teachers College at Columbia University

Internship Program: Alpert Medical School of Brown University

Clinical Interests: Working with adolescents and their families in outpatient and acute care settings, treating anxiety, depression, and suicidal thoughts and behaviors.

Research Interests: Studying and improving the assessment and prediction of suicidal thoughts and behaviors in adolescent populations.



Aishwarya Thakur, PhD

Contact: aishwarya_thakur@brown.edu

Postdoc Emphasis: Adult (CPP)

Program: Clinical Psychology Program (CPP)

Fellowship: Acceptance and Commitment Therapy (ACT)

Graduate School: Palo Alto University

Internship Program: Denver Health Medical Center

Clinical Interests: Culturally responsive ACT and interpersonal process-based approaches for ethnic minorities and low socio-economic groups with serious mental illness (SMI), trauma histories, and personality disorders.

Research Interests: Improving mental health access and enhancing the cultural responsiveness of mental health services and training to better serve minority groups.



Jacob Varela, PsyD

Contact: jacob_varela@brown.edu

Postdoc Emphasis: Neuro (CNSP)

Program: Clinical Neuropsychology Specialty Program (CNSP)

Fellowship: Neuropsychology

Graduate School: Regent University

Internship Program: Missouri Health Sciences Psychology Consortium

Clinical Interests: Conducting comprehensive neuropsychological assessments for a broad array of neurological concerns and conditions. Interested in neurodegenerative diseases, as well as epilepsy and movement disorders. Specific areas of interest include pre- and post-surgical evaluations, intracarotid sodium amobarbital procedure (Wada procedure), differential diagnostic evaluations, and inpatient consultation.

Research Interests: Clinically relevant research in areas such as the development of performance validity indicators, evaluating the correlation between neuropsychological performance and neuroimaging in the epilepsy population, and development of mobile technology interventions for various neurological conditions.



Gemma Wallace, PhD

Contact: gemma_wallace@brown.edu

Postdoc Emphasis: Suicide T32

Program: Research Fellowship Program (RFP)

Fellowship: Suicide Research T32

Graduate School: Colorado State University

Internship Program: Alpert Medical School of Brown University

Clinical Interests: Emotion regulation, self-injurious and suicidal thoughts and behaviors, substance use and misuse, and improving the accessibility of mental health services for underserved populations.

Research Interests: Affective, cognitive, and socioenvironmental mechanisms underlying suicidality and substance misuse, EMA and EMI methodologies, and implications for treatment.



Sean Womack, PhD

Contact: sean_womack@brown.edu

Postdoc Emphasis: STAR T32

Program: Research Fellowship Program (RFP)

Fellowship: Childhood Stress, Trauma, and Resilience T32

Graduate School: University of Virginia

Internship Program: University of Rochester Medical Center

Clinical Interests: My clinical interests include the assessment for atypical neurodevelopment including autism spectrum disorder and ADHD as well as applying cognitive behavioral and acceptance-based interventions with adolescents with depression and anxiety.

Research Interests: Leveraging longitudinal and genetically informed methods to understand genetic and environmental contributions to cognitive and socioemotional development across the lifespan.



Anna Yeo, PhD

Contact: anna_yeo@brown.edu

Postdoc Emphasis: STAR T32 (Child)

Program: Research Fellowship Program (RFP)

Fellowship: Childhood Stress, Trauma, and Resilience T32

Graduate School: University at Albany - SUNY

Internship Program: Alpert Medical School of Brown University

Clinical Interests: Management of chronic pediatric illnesses and comorbid psychosocial difficulties; family- and community-based interventions for childhood physical and mental health conditions; cognitive behavioral therapy for childhood anxiety.

Research Interests: Biobehavioral mechanisms underlying the links between multi-level stressors and pediatric health and developmental outcomes; identification of family and community risk and resilience and development of prevention/intervention programs for pediatric chronic illnesses including asthma, obesity, and diabetes.
