

Postdoctoral Fellows 2022-2023



Maria Accavitti, PhD

Contact: maria_accavitti@brown.edu

Postdoc Emphasis: Child (CCPSP)

Program: Clinical Child Psychology Specialty Program (CCPSP)

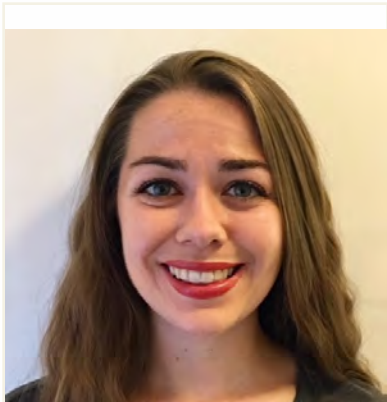
Fellowship: Early Childhood

Graduate School: University of Miami

Internship Program: Mailman Center for Child Development

Clinical Interests: My clinical interests include infant and early childhood mental health consultation, intervention, and assessment services.

Research Interests: My research interests include understanding and promoting racial and social equity in access to high quality early childhood education and mental health services.



Ariana Albanese, PhD

Contact: ariana_albanese@brown.edu

Postdoc Emphasis: Adult Beh Med Child

Program: Research Fellowship Program (RFP)

Fellowship: Implementation Science

Graduate School: Drexel University

Internship Program: Alpert Medical School of Brown University

Clinical Interests: Evidence-based treatment of comorbid psychiatric and medical conditions, particularly psychological distress in the context of reproductive events.

Research Interests: Clarifying the factors impacting parental-child well-being during pregnancy and postpartum, and the development of interventions to better support parents through the postpartum transition.



Maggie Allen, PhD

Contact: maggie_allen@brown.edu

Postdoc Emphasis: Adult (CPP)

Program: Clinical Psychology Program (CPP)

Fellowship: Perinatal Mental Health

Graduate School: University of Denver

Internship Program: VA Pittsburgh Healthcare System Internship

Clinical Interests: My clinical interests are rooted in women's mental health, with particular focus on working with perinatal women and couples.

Research Interests: My program of research is focused on understanding the interplay between couples' mental health and relationship functioning during the perinatal period, with a particular focus on exploring novel prevention options for postpartum depression.



Micheline Anderson, PhD

Contact: micheline_anderson@brown.edu

Postdoc Emphasis: Adult (APA)

Program: Clinical Psychology Program (CPP)

Fellowship: Obstetrics and Gynecology Integrated Behavioral Health

Graduate School: Teachers College at Columbia University

Internship Program: Alpert Medical School of Brown University

Clinical Interests: Role of psychology in integrative healthcare and wellness and the application of mindfulness and acceptance-based interventions with individuals with mood disorders and comorbid medical or substance use disorders.

Research Interests: Women's mental health. Mind-body intervention development. Understanding biobehavioral mechanisms linking stress, psychopathology and health conditions.

Amanda Arulpragasam, PhD

Contact: amanda_arulpragasam@brown.edu

Postdoc Emphasis: Adult

Program: Research Fellowship Program (RFP)

Fellowship: Neuroimaging and Neuromodulation

Graduate School: Emory University

Internship Program: Dartmouth-Hitchcock Medical Center

Clinical Interests: Mood and anxiety disorders (PTSD).

Research Interests: Neurobiology of motivation and decision-making and development of treatments.

Andrew Barnett, PhD

Contact: andrew_barnett@brown.edu

Postdoc Emphasis: HIV T32 (Child)

Program: Research Fellowship Program (RFP)

Fellowship: Adolescent/Young Adult Biobehavioral HIV Research
T32

Graduate School: George Washington University

Internship Program: Alpert Medical School of Brown University

Clinical Interests: Cognitive-behavioral therapy with children and adolescents with comorbid medical conditions.

Research Interests: Behavioral factors associated with HIV risk among adolescents



Madeline Benz, PhD

Contact: madeline_benz@brown.edu

Postdoc Emphasis: Suicide T32

Program: Research Fellowship Program (RFP)

Fellowship: Suicide Research T32

Graduate School: Clark University

Internship Program: Alpert Medical School of Brown University

Clinical Interests: Addiction, Post-traumatic Stress Disorder, and their co-occurrence.

Research Interests: Risk assessment, prevention, and intervention for suicidal behaviors and accidental injury in the context of substance use for individuals with substance use disorders and co-occurring mental health conditions.



Prachi H Bhuptani, PhD

Contact: prachi_bhuptani@brown.edu

Postdoc Emphasis: Adult

Program: Research Fellowship Program (RFP)

Fellowship: Intervention and Prevention of Trauma and Substance Use

Graduate School: Miami University

Internship Program: Alpert Medical School of Brown University

Clinical Interests: Working with trauma survivors from a CBT and third-wave framework.

Research Interests: The intersection between stigma and sexual violence and its impact on recovery



Nicholas Canby, PhD

Contact: nicholas_canby@brown.edu

Postdoc Emphasis: Adult

Program: Research Fellowship Program (RFP)

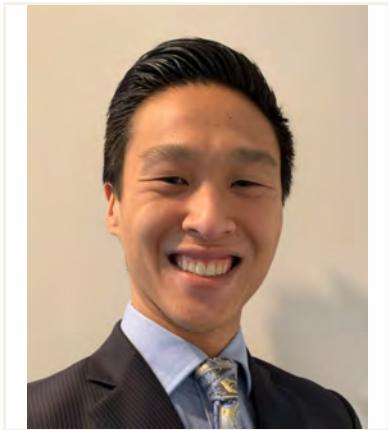
Fellowship: Interdisciplinary Mindfulness and Meditation Research

Graduate School: Clark University

Internship Program: Southern Arizona VA Health Care System

Clinical Interests: Treating patients with trauma, religious/existential issues, dissociation, couples.

Research Interests: Mindfulness meditation, anomalous and dissociative experiences, mechanisms and moderators of psychological treatments, psychology of religion, and intimacy.



Lawrence Chan, PsyD

Contact: lawrence_m_chan@brown.edu

Postdoc Emphasis: Neuro (CNSP)

Program: Clinical Neuropsychology Specialty Program (CNSP)

Fellowship: Neuropsychology and Intervention

Graduate School: William James College

Internship Program: Phoenix VA Health Care System

Clinical Interests: N/A

Research Interests: N/A



Kimberly Chapman, PhD

Contact: kimberly_chapman@brown.edu

Postdoc Emphasis: Neuro (CNSP)

Program: Clinical Neuropsychology Specialty Program (CNSP)

Fellowship: Neuropsychology

Graduate School: Kent State University

Internship Program: Alpert Medical School of Brown University

Clinical Interests: Medical neuropsychology.

Research Interests: Examining the relationship between neuropsychiatric symptoms in dementia and caregiver burden; development and implementation of supportive dementia caregiver interventions.



Bianka Charity-Parker, PhD

Contact: bianka_charity-parke@brown.edu

Postdoc Emphasis: Child (CCPSP)

Program: Clinical Child Psychology Specialty Program (CCPSP)

Fellowship: Clinical Outcomes of Child Intensive Services

Graduate School: University of Virginia

Internship Program: Center for Multicultural Training in Psychology

Clinical Interests: Children and adolescents with difficulties in emotion regulation, mood disorders, complex trauma, and co-occurring suicidal behaviors and non-suicidal self-injury; culturally sensitive evidence-based treatment; family focused interventions and parent coaching.

Research Interests: Exploring parental and intergenerational relationship (e.g., natural mentors) predictors of racial-ethnic minority child and adolescent mental health outcomes and well-being.



Po-hun Chou, PhD

Contact: po-hun_chou@brown.edu

Postdoc Emphasis: Child T32

Program: Research Fellowship Program (RFP)

Fellowship: Child Mental Health Research T32

Graduate School: Florida International University

Internship Program: Alpert Medical School of Brown University

Clinical Interests: Individual and family therapy for children and families at intensive outpatient or inpatient levels of care.

Research Interests: Engagement with community partners to disseminate evidence-based mental health practices to traditionally underserved children and families.



Alexandrea Craft, PhD

Contact: alexandrea_craft@brown.edu

Postdoc Emphasis: Child T32

Program: Research Fellowship Program (RFP)

Fellowship: Child Mental Health Research T32

Graduate School: University of Massachusetts - Amherst

Internship Program: Children's Hospital of Philadelphia

Clinical Interests: Dr. Craft's clinical interests include perinatal mental health, infant mental health, and early childhood trauma. Dr. Craft utilizes both developmentally and culturally informed approaches in working with patients from diverse backgrounds.

Research Interests: Dr. Craft's research interests focus on prenatal influences of infant development, child mental health and family functioning. She is interested in developing programs and services to support children and families at risk for poor developmental and mental health outcomes.



Grace Cushman, PhD

Contact: grace_cushman@brown.edu

Postdoc Emphasis: F32 (Child) / Child T32

Program: Research Fellowship Program (RFP)

Fellowship: F32 (Child)

Child Mental Health Research T32

Graduate School: University of Georgia

Internship Program: Alpert Medical School of Brown University

Clinical Interests: Improving psychosocial functioning among youth with chronic illnesses.

Research Interests: Examining medication adherence within pediatric illness samples with the goal of improving families' abilities to adhere to treatment recommendations.



Teresa Daniels, MD

Contact: teresa_daniels@brown.edu

Postdoc Emphasis: STAR T32 (Child)

Program: Research Fellowship Program (RFP)

Fellowship: Childhood Stress, Trauma, and Resilience T32

Graduate School: Virginia Commonwealth University School of Medicine

Internship Program: Brown University, General Psychiatry Residency

Clinical Interests: Working with children and adolescents in both emergency psychiatry settings and in outpatient psychotherapy.

Research Interests: Biological changes associated with early life stress.



Alyssa De Vito, PhD

Contact: alyssa_de_vito@brown.edu

Postdoc Emphasis: Neuro

Program: Research Fellowship Program (RFP)

Fellowship: Neuropsychology/Cognitive Neuroscience Fellowship in
Alzheimer's Research

Graduate School: Louisiana State University-Baton Rouge

Internship Program: Alpert Medical School of Brown University

Clinical Interests: Neuropsychological assessment with older adults at-risk for cognitive decline.

Research Interests: Early detection of cognitive decline in older adults.



Sarah Dreyer-Oren, PhD

Contact: sarah_dreyer-oren@brown.edu

Postdoc Emphasis: Adult, Beh Med

Program: Research Fellowship Program (RFP)

Fellowship: Addiction & Physical Activity Research

Graduate School: Miami University

Internship Program: Ann Arbor VA Healthcare System

Clinical Interests: Dialectical Behavior Therapy, Motivational Interviewing and Harm Reduction for SUD, Exposure therapy for anxiety and OC-spectrum disorders.

Research Interests: Substance use disorder and mood/anxiety disorder comorbidities, positive emotion regulation.



Kristine Durkin, PhD

Contact: kristine_durkin@brown.edu

Postdoc Emphasis: Child T32

Program: Research Fellowship Program (RFP)

Fellowship: Child Mental Health Research T32

Graduate School: West Virginia University

Internship Program: Alpert Medical School of Brown University

Clinical Interests: Evidence-based evaluations and interventions to foster adjustment to diagnosis, quality of life, and psychosocial functioning in pediatric patients.

Research Interests: Development and evaluation of behavioral interventions to promote self-management of chronic illness across the child's lifespan (e.g., adherence to medication, transfer of responsibility from caregiver to child, readiness to transition to adult care).



Sheina Emrani, PhD

Contact: sheina_emrani@brown.edu

Postdoc Emphasis: Neuro

Program: Research Fellowship Program (RFP)

Fellowship: Neuropsychology/Cognitive Neuroscience Fellowship in Alzheimer's Research

Graduate School: Rowan University

Internship Program: VASDHS/UCSD Psychology Internship Program

Clinical Interests: Working with individuals who are experiencing cognitive decline in the context of aging and psychiatric overlay.

Research Interests: Early diagnosis of cognitive deficits via digital assessment in primary care settings, as well as the utility of biomarkers for early diagnosis of cognitive decline.



Natalie Fenn, PhD

Contact: natalie_fenn@brown.edu

Postdoc Emphasis: HIV T32 (Adult)

Program: Research Fellowship Program (RFP)

Fellowship: Adolescent/Young Adult Biobehavioral HIV T32

Graduate School: University of Rhode Island

Internship Program: Alpert Medical School of Brown University

Clinical Interests: Interprofessional primary care models, adult mental and behavioral health, intervention and prevention methods for high-risk populations and trauma survivors.

Research Interests: Biosychosocial determinants of health; utilizing civic engagement principles to improve health behaviors among understudied populations.



Yohansa Fernández, PhD

Contact: yohansa_fernandez@brown.edu

Postdoc Emphasis: HIV T32 (Adult)

Program: Research Fellowship Program (RFP)

Fellowship: Adolescent/Young Adult Biobehavioral HIV Research T32

Graduate School: New York University, Silver School of Social Work

Internship Program: N/A - Social Work

Clinical Interests: N/A

Research Interests: Communities of trans-experience; people who inject drugs; engagement in HIV prevention and treatment; syndemics; intersectionality.



Laura Fischer, PhD

Contact: laura_fischer@brown.edu

Postdoc Emphasis: Adult (CPP)

Program: Clinical Psychology Program (CPP)

Fellowship: Acceptance and Commitment Therapy (ACT)

Graduate School: Northeastern University

Internship Program: Temple University Tuttleman Counseling Services

Clinical Interests: Third-wave cognitive behavioral approaches to treating psychopathology, particularly anxiety disorders; young adult mental health.

Research Interests: Predictors of psychological help-seeking; sociocultural influences on body image and disordered eating; effectiveness of third-wave cognitive behavioral treatments, particularly for the treatment of eating disorders.



Katelyn Fox, PhD

Contact: katelyn_fox@brown.edu

Postdoc Emphasis: Child

Program: Research Fellowship Program (RFP)

Fellowship: Pediatric Weight Control

Graduate School: University of Rhode Island

Internship Program: n/a

Clinical Interests: Pediatric nutrition, behavioral interventions for the prevention and treatment of childhood obesity.

Research Interests: Understanding contextual factors that influence the development of eating behavior and dietary intake to inform sustainable, equitable interventions and policies to prevent and treat childhood obesity. Promoting the adoption and integration of evidenced based practices, interventions, and policies into healthcare and public health settings to prevent and treat chronic diseases, such as obesity, and reduce health disparities.



Alyssa Gatto, PhD

Contact: alyssa_gatto@brown.edu

Postdoc Emphasis: Child T32

Program: Research Fellowship Program (RFP)

Fellowship: Child Mental Health Research T32

Graduate School: Virginia Tech

Internship Program: Alpert Medical School of Brown University

Clinical Interests: Providing evidence-based services to underserved and justice-involved adolescents.

Research Interests: Brief technology-based emotion regulation prevention programs for adolescents.



Hannah Herc, PhD

Contact: hannah_herc@brown.edu

Postdoc Emphasis: Adult (CPP)

Program: Clinical Psychology Program (CPP)

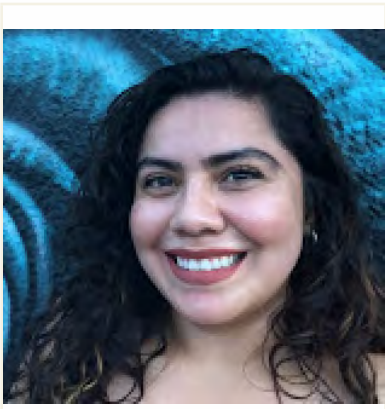
Fellowship: Acceptance and Commitment Therapy (ACT)

Graduate School: University of Toledo

Internship Program: Medical College of Georgia/ Charlie Norwood VAMC

Clinical Interests: My clinical interest is in the integration of acceptance and mindfulness based-practices, primarily ACT, to the treatment of complex client presentations with co-morbid diagnosis including post-traumatic stress disorder, borderline personality disorder, and major depression.

Research Interests: My research works to empirically evaluate mindfulness and acceptance based-approaches to treatment and factors that underly their efficacy. My current research is related to relational frame theory and the experiential use of metaphors within Acceptance and commitment therapy (ACT).



Nancy Herrera, PhD

Contact: nancy_herrera@brown.edu

Postdoc Emphasis: Child

Program: Research Fellowship Program (RFP)

Fellowship: Adolescent Psychopathology and Psychotherapy

Graduate School: University of Wisconsin-Madison

Internship Program: El Paso Psychology Internship Consortium

Clinical Interests: Latinx psychological well-being, generational and ancestral trauma, adaptation, and development of culturally-responsive assessments and treatments, and justice for the liberation of all historically oppressed communities of color.

Research Interests: Nancy's research interests center on developing and tailoring treatments for minoritized populations. Particularly, she is interested in developing and tailoring mental health treatments aimed to support the healing and resilience in the aftermath of generational trauma among minoritized youth and women. As a woman of Mexican decent, scholarly work is her means of advocacy and resistance to challenge historical and deficit notions of mental health and education among minoritized and Chicax/Latinx communities.



Samuel Highland, PsyD

Contact: samuel_highland@brown.edu

Postdoc Emphasis: Child (CCPSP)

Program: Clinical Child Psychology Specialty Program (CCPSP)

Fellowship: Dialectical Behavior Therapy for Adolescents (DBT-A)

Graduate School: Antioch University New England

Internship Program: Family Service & Guidance Center

Clinical Interests: Borderline personality disorder, developmental trauma, and LGBTQ identity.

Research Interests: Treatment outcomes research, adoptive identity, and addictive behaviors.



Caroline Hinkle, PhD

Contact: caroline_hinkle@brown.edu

Postdoc Emphasis: Neuro (CNSP)

Program: Clinical Neuropsychology Specialty Program (CNSP)

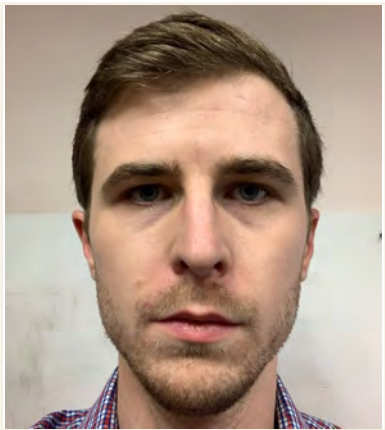
Fellowship: Neuropsychology/Geropsychology

Graduate School: University of Maryland - Baltimore

Internship Program: VAMHCS/UM SOM Psychology Internship Consortium

Clinical Interests: Dementia evaluation; medical neuropsychology; delirium.

Research Interests: Medical neuropsychology; aging; neural correlates of cognition.



Christopher Hughes, PhD

Contact: christopher_hughes@brown.edu

Postdoc Emphasis: Suicide T32 / Adult

Program: Research Fellowship Program (RFP)

Fellowship: Suicide Research T32

Suicide Assessment and Technology Research (Adult)

Graduate School: Rutgers University NJ-Piscataway/New Brunswick

Internship Program: Alpert Medical School of Brown University

Clinical Interests: Suicide, Self-Injury, Behavioral & Emotional Dysregulation, Borderline Personality Disorder, Dialectical Behavior Therapy, Acceptance & Commitment Therapy

Research Interests: Suicidal and non-suicidal self-injurious thoughts and behaviors, ecological momentary assessment, transdiagnostic interventions



Jessica Janze, PhD

Contact: jessica_janze@brown.edu

Postdoc Emphasis: Child (CCPSP)

Program: Clinical Child Psychology Specialty Program (CCPSP)

Fellowship: Adolescent Intensive Services

Graduate School: University of Massachusetts - Boston

Internship Program: University of Utah Medical Center, Huntsman Mental

Clinical Interests: Supporting children, adolescents, and families experiencing mood and other related disorders at intensive inpatient levels of care.

Research Interests: The role of mindfulness and mindfulness-based interventions in supporting caregivers and service providers.



Shereen Khoo, PhD

Contact: shereen_khoo@brown.edu

Postdoc Emphasis: Adult

Program: Research Fellowship Program (RFP)

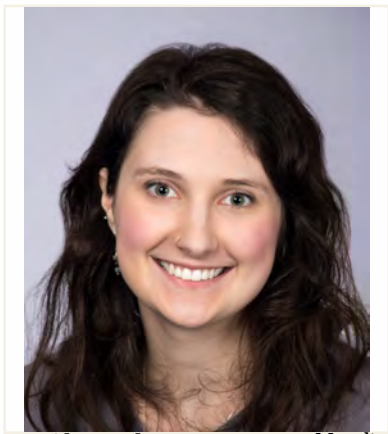
Fellowship: Methods to Improve Diagnostic Assessment and Services (MIDAS) Project

Graduate School: University of Notre Dame

Internship Program: Alpert Medical School of Brown University

Clinical Interests: Transdiagnostic treatment of internalizing disorders.

Research Interests: Dimensional models of personality and psychopathology.



Michaela Koveleskie, PsyD

Contact: michaela_koveleskie@brown.edu

Postdoc Emphasis: Neuro (CNSP)

Program: Clinical Neuropsychology Specialty Program (CNSP)

Fellowship: Geriatric Neuropsychology

Graduate School: Xavier University

Internship Program: Missouri Health Sciences Psychology Consortium

Clinical Interests: My clinical interests include geriatrics, cognitive functioning in individuals with psychotic spectrum disorders, and the intersection between medical complexities and neuropsychological conditions.

Research Interests: My primary research interest is in assessment, the development of appropriate norms, and test development.



Sharon Lee, PhD

Contact: sharon_y_lee@brown.edu

Postdoc Emphasis: STAR T32 (Child)

Program: Research Fellowship Program (RFP)

Fellowship: Childhood Stress, Trauma, and Resilience T32

Graduate School: University of Connecticut

Internship Program: Alpert Medical School of Brown University

Clinical Interests: Stress and coping in relation to cardiovascular events and disease management, and behavioral interventions for mitigating cardiovascular disease risk.

Research Interests: Biobehavioral mechanisms underlying the effects of posttraumatic stress, trauma exposure, and psychosocial stress on cardiovascular health.



Gina Mason, PhD

Contact: gina_mason@brown.edu

Postdoc Emphasis: Child

Program: Research Fellowship Program (RFP)

Fellowship: Sleep, Sleep Loss and the Neuroscience of Attention and Learning in Children

Graduate School: Cornell University

Internship Program: n/a

Clinical Interests: N/A

Research Interests: Influence of sleep restriction on brain connectivity, hyperactivity/impulsivity, and memory consolidation in neurotypical children and children with underlying neurodevelopmental conditions (ADHD, autism)



Emily May, PhD

Contact: emily_may@brown.edu

Postdoc Emphasis: Child (CCPSP)

Program: Clinical Child Psychology Specialty Program (CCPSP)

Fellowship: Adolescent Acute Care Services for Addiction and High-Risk Behaviors

Graduate School: The Pennsylvania State University, University Park
Doctoral Program

Internship Program: University of Oklahoma Health Sciences Center

Clinical Interests: Brief and longer-term interventions for youth and their families, including youth with high-risk behaviors, substance use, and co-occurring disorders.

Research Interests: Aims to advance understanding of the etiology and course of substance use and co-occurring problems, with the goal of informing prevention and intervention efforts for diverse populations of youth. She is interested in leveraging longitudinal methods to study the predictors and consequences of substance use in adolescence and young adulthood.



Nauder Namaky, PhD

Contact: nauder_namaky@brown.edu

Postdoc Emphasis: Suicide T32

Program: Research Fellowship Program (RFP)

Fellowship: Suicide Research T32

Graduate School: University of Virginia

Internship Program: Alpert Medical School of Brown University

Clinical Interests: Evidence-based treatment of moderate-to-severe affective disorders and the integration of social support partners into treatment for individual psychopathology.

Research Interests: Approach and avoidance motivation in affective disorders and social processes that augment these motivations.



Sarah Neville, PhD

Contact: sarah_neville@brown.edu

Postdoc Emphasis: HIV T32 (Child)

Program: Research Fellowship Program (RFP)

Fellowship: Adolescent/Young Adult Biobehavioral HIV T32

Graduate School: Boston College

Internship Program: N/A

Clinical Interests: N/A

Research Interests: My research interests are around children lacking parental care in low-resource context, including those in residential care institutions and the reintegration of children into families.



Sarah (Owens) McHugh, PhD

Contact: sarah_owens@brown.edu

Postdoc Emphasis: Child (CCPSP)

Program: Clinical Child Psychology Specialty Program (CCPSP)

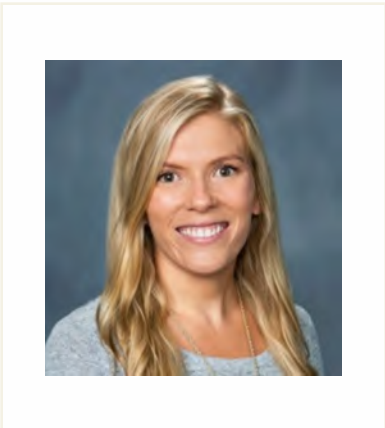
Fellowship: The Pediatric Anxiety Research Center (PARC)

Graduate School: University of North Carolina-Chapel Hill

Internship Program: Alpert Medical School of Brown University

Clinical Interests: Using CBT and DBT approaches to address emotion dysregulation, mood disorders, and anxiety disorders with a focus on adolescents at high risk for suicide and self-injurious behavior.

Research Interests: Menstrual cycle effects on suicidal behavior and related risk factors, including impulsivity, irritability, and rejection sensitivity; developmental risk factors for emotion dysregulation and sensitivity to ovarian hormone fluctuation during puberty, including trauma exposure.



Julia Paulson, PhD

Contact: julia_paulson@brown.edu

Postdoc Emphasis: Adult (CPP)

Program: Clinical Psychology Program (CPP)

Fellowship: Posttraumatic Stress Disorder (PTSD)

Graduate School: University of Notre Dame

Internship Program: VA Ann Arbor

Clinical Interests: Evidence-based interventions for internalizing and trauma-related disorders.

Research Interests: Effects of trauma on health and wellbeing across the lifespan, particularly during reproductive transitions. Development of trauma interventions.

Jennifer Poon, PhD

Contact: jennifer_poon@brown.edu

Postdoc Emphasis: F32 (Child) / Child (APA)

Program: Research Fellowship Program (RFP)

Fellowship: F32

Dialectical Behavior Therapy for Adolescents (DBT-A)

Graduate School: George Mason University

Internship Program: West Virginia University



Clinical Interests: DBT, CBT, MBSR, ACT, suicide risk assessment, sexual and gender minority health, trauma-based interventions, eating disorders, adolescents/families/parenting.

Research Interests: Multiple methods (e.g., self-report, behavioral observation, cortisol, sex hormones, fMRI, EMA) to investigate mechanisms underlying adolescents' psychological functioning, including high-risk behaviors such as substance use, suicide, and NSSI.

Olivia Preston, PhD

Contact: olivia_preston@brown.edu

Postdoc Emphasis: Adult (CPP)

Program: Clinical Psychology Program (CPP)

Fellowship: Trauma and Readjustment Clinic

Graduate School: University of Southern Mississippi

Internship Program: Orlando VA Healthcare System Psychology Internship



Clinical Interests: Improving mental health and psychosocial functioning among Veterans, particularly with evidence-based assessment and treatment of PTSD/trauma, emotion dysregulation, and sleep disorder symptoms.

Research Interests: Examining personality and personality disorder traits, sociodemographic factors, suicidal thoughts and behaviors, and treatment adherence and outcomes to inform clinical care.

Darlynn Rojo-Wissar, PhD

Contact: darlynn_rojo-wissar@brown.edu

Postdoc Emphasis: STAR T32 (Child)

Program: Research Fellowship Program (RFP)

Fellowship: Childhood Stress, Trauma, and Resilience T32

Graduate School: Johns Hopkins University

Internship Program: NA - Mental Health

Clinical Interests: N/A

Research Interests: Early life adversity, the intersection of mental and physical health, health disparities, sleep and circadian rhythms.

Victoria Sanborn, PhD

Contact: victoria_sanborn@brown.edu

Postdoc Emphasis: Neuro (CNSP)

Program: Clinical Neuropsychology Specialty Program (CNSP)

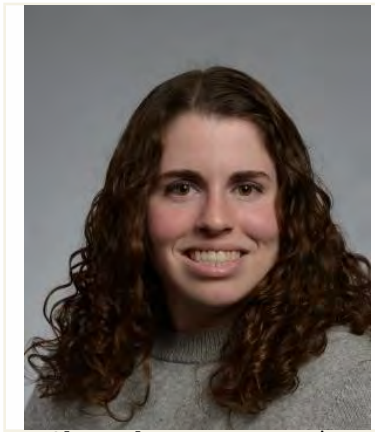
Fellowship: Aging and Dementia

Graduate School: Kent State University

Internship Program: VA Boston Healthcare System

Clinical Interests: Neuropsychological assessment of adults with neurologic/neurodegenerative disorders.

Research Interests: Evaluating the effects of health behaviors and interventions on the preservation of the aging brain.



Kaitlin Sheerin, PhD

Contact: kaitlin_sheerin@brown.edu

Postdoc Emphasis: HIV T32 (Child)

Program: Research Fellowship Program (RFP)

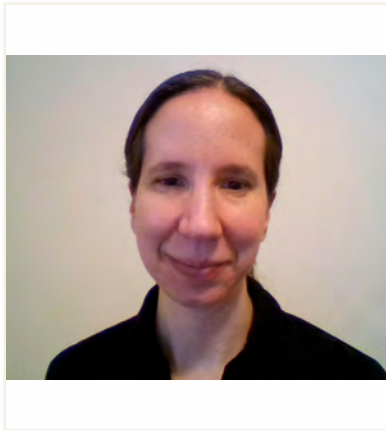
Fellowship: Adolescent/Young Adult Biobehavioral HIV Research T32

Graduate School: University of Missouri-Columbia

Internship Program: Alpert Medical School of Brown University

Clinical Interests: Assessment and treatment of complex clinical problems in court-involved youth.

Research Interests: Development and evaluation of personalized treatment approaches for justice-involved youths.



Maria Stacy, PhD

Contact: maria_stacy@brown.edu

Postdoc Emphasis: Neuro (CNSP)

Program: Clinical Neuropsychology Specialty Program (CNSP)

Fellowship: Pediatric Neuropsychology

Graduate School: Southern Illinois University- Carbondale

Internship Program: Western Kentucky Psychology Internship Consortium

Clinical Interests: Neuropsychological assessment of acquired and developmental disorders in pediatric populations.

Research Interests: Understanding the way executive functioning is affected by acquired and developmental disorders, and identifying the interventions and accommodations that minimize the effects executive dysfunction can have on academic and daily functioning.



Allison Stumper, PhD

Contact: allison_stumper@brown.edu

Postdoc Emphasis: Child T32

Program: Research Fellowship Program (RFP)

Fellowship: Child Mental Health Research T32

Graduate School: Temple University

Internship Program: Alpert Medical School of Brown University

Clinical Interests: Broadly women's mental health and the integration of CBT and third-wave therapies.

Research Interests: Understanding sex differences in the emergence and exacerbation of mood disorders during adolescence to determine mechanisms through which hormonal changes such as puberty and menstruation confer risk.



Kelli Sullivan, PhD

Contact: kelli_sullivan@brown.edu

Postdoc Emphasis: Neuro (CNSP)

Program: Clinical Neuropsychology Specialty Program (CNSP)

Fellowship: Neuropsychology

Graduate School: University of Houston

Internship Program: Alpert Medical School of Brown University

Clinical Interests: Neuropsychological assessment of adults with dementia and neurological disorders

Research Interests: Everyday functioning and prospective memory in cognitively impaired populations and older adults with disease.



Elizabeth Tampke, PhD

Contact: elizabeth_tampke@brown.edu

Postdoc Emphasis: Child

Program: Research Fellowship Program (RFP)

Fellowship: Adolescent Emotion Regulation and Risk Behaviors

Graduate School: University of Kansas

Internship Program: Nebraska Internship Consortium in Professional Psy

Clinical Interests: Aggressive behavior in adolescents.

Research Interests: The development of childhood aggression and how this translates to teen dating violence.



Katherine Tezanos, PhD

Contact: katherine_tezanos@brown.edu

Postdoc Emphasis: Suicide T32

Program: Research Fellowship Program (RFP)

Fellowship: Suicide Research T32

Graduate School: Teachers College at Columbia University

Internship Program: Alpert Medical School of Brown University

Clinical Interests: Working with adolescents and their families in outpatient and acute care settings, treating anxiety, depression, and suicidal thoughts and behaviors.

Research Interests: Studying and improving the assessment and prediction of suicidal thoughts and behaviors in adolescent populations.



Rebecca Troeger, PhD

Contact: rebecca_troeger@brown.edu

Postdoc Emphasis: Adult (CPP)

Program: Clinical Psychology Program (CPP)

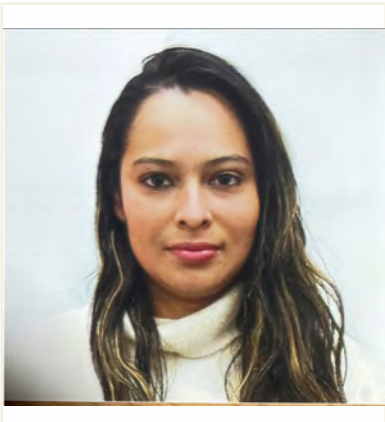
Fellowship: Family Therapy

Graduate School: University of Massachusetts - Boston

Internship Program: Edith Nourse Rogers Memorial VA Hospital

Clinical Interests: Feminist-relational psychotherapy, recovery-oriented care, multi-person therapies.

Research Interests: Role of social context and relationships in mental health; anti-racism and power dynamics in mental health care.



Natalia Villa Hernandez, PsyD

Contact: natalia_villa_hernandez@brown.edu

Postdoc Emphasis: Adult (CPP)

Program: Clinical Psychology Program (CPP)

Fellowship: General Mental Health

Graduate School: The University of Hartford

Internship Program: VA Greater Hartford Clinical Psychology Internship

Clinical Interests: Complex trauma, mood disorders, diversity, and issues of intersecting identities.

Research Interests: Improving health care quality, equity, and cultural responsiveness care with marginalized communities.



Anna Yeo, PhD

Contact: anna_yeo@brown.edu

Postdoc Emphasis: STAR T32 (Child)

Program: Research Fellowship Program (RFP)

Fellowship: Childhood Stress, Trauma, and Resilience T32

Graduate School: University at Albany - SUNY

Internship Program: Alpert Medical School of Brown University

Clinical Interests: Management of chronic pediatric illnesses and comorbid psychosocial difficulties; family- and community-based interventions for childhood physical and mental health conditions; cognitive behavioral therapy for childhood anxiety.

Research Interests: Biobehavioral mechanisms underlying the links between multi-level stressors and pediatric health and developmental outcomes; identification of family and community risk and resilience and development of prevention/intervention programs for pediatric chronic illnesses including asthma, obesity, and diabetes.
